



浙江升宏机械有限公司

ZHEJIANG SHENGHONG MECHANICAL CO.,LTD.

地址: 浙江省温岭市松门镇东南工业区海天路
 Add: Haitian Road, Southeast Industry Zone, Songmen Town, Wenling City, Zhejiang 317511 China
 电话/Tel: +86-576-8666 2332 传真/Fax: +86-576-8666 9338
 Http://www.chinashallop.com
 E-mail: shenghong@chinashallop.com
 邮编/P.C: 317511

注: 本目录内所有系列产品说明、数据和实际之间可能存在误差, 请以实际产品为准。如有更改, 恕不另行通知。
 Note: This catalogue include all of series products specification, data might be difference with subject, please refer to our actual products. Any change, will be not notified.



微信公众号



企业官方网站

2023-10版



升宏机械
Shenghong Mechanical

CHINASHALLOP

www.chinashallop.com



国家高新技术企业

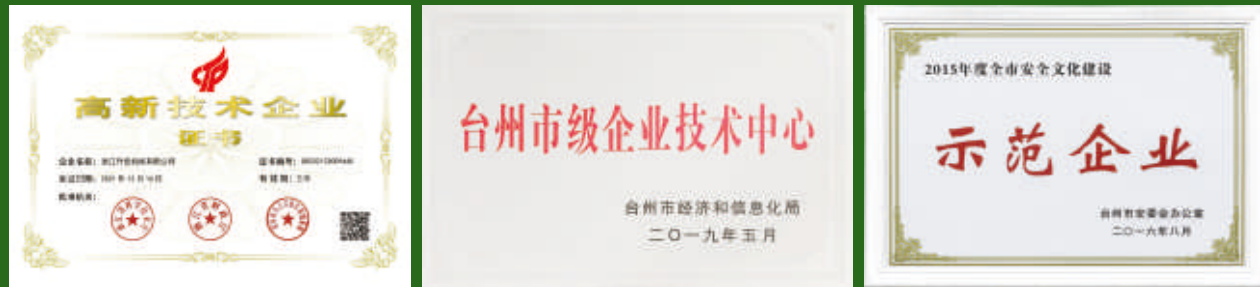
浙江升宏机械有限公司

ZHEJIANG SHENGHONG MECHANICAL CO.,LTD.

匠心智造, 创新致远
 Ingenuity for manufacturing innovation
 for far-reaching



匠心智造, 创新致远
Ingenuity for manufacturing innovation
for far-reaching



关于升宏
ABOUT SHENGHONG
www.chinashallop.com

浙江升宏机械有限公司是一家专业生产气动元器件、接线盒、汽车配件和减、变速齿轮箱的国家高新技术企业, 公司现拥有160-950吨压铸机、自动铝液给汤线、铝合金自动钝化线, 加工中心、数控车床、光谱仪、三坐标测量仪、轮廓仪、电脑泄漏测试仪、工业CT机等各种先进的生产检测设备, 生产的产品分别配套在气动自动控制、防爆、环保、汽车与农业机械上, 已成为美国ASCO、美国ROSS、德国TIMMER、日本TBK、世格流体控制(上海)有限公司、埃迈诺冠气动器件(苏州)有限公司、中联重机浙江有限公司等国内外众多知名厂商可信赖的协作伙伴。

公司拥有一支专业的科技创新和新品开发队伍, 能够自行设计制造各种高难度压铸模具, 为广大客户提供高科技的新产品。公司始终奉行“客欲为标准, 持续作创新”的质量方针, 恪守“诚信、合作、发展、共赢”的经营理念, 严格按照ISO9001体系标准管控产品质量, 以精益生产贯穿制造全过程, 公司连续多年获得“省重合同守信用单位”、“省科技型中小企业”、“市重点工业企业”、“市精细化管理示范企业”、“市安全文化建设示范企业”等多项殊荣。

春潮澎湃起, 正是扬帆时, 展望前程, 全体升宏人正围绕新的宏伟蓝图, 以转型升级为主轴, 以创新驱动为引领, 以奋斗姿态开启高质量发展新篇章。

ZHEJIANG SHENGHONG MECHANICAL CO.,LTD is a national high-tech enterprise specializing in the production of pneumatic components,junction box,automotive components,reduction gear box,speed-changing gear box.Our company has 160 to 950 tons of die casting machine,automatic aluminum melting and feeding system,Aluminium alloy automatic passivation production line,CNC machine,NC lathes,spectrograph,CMM,contrassor,computer leaking test instrument,industrial CT machine and others advanced production and testing equipment.Manufacture parts use for pneumatic auto control,explosion-proof,environment protection,automotive and agriculture mechanical area,we have became reliable partner for many well-know manufacturers in domestic and oversea,such as ASCO L.P.,ROSS CONTROL,GERMAN TIMMER GMBH,JAPAN TBK,ASCO VALVE CO.,LTD,NORGREN and ZOOMLINE ZHEJIANG CO.,LTD. Our company has a professional scientific and technological innovation and new product development team,be able to design and manufacture variety of difficult casting tools and provide high technology new part to our clients.We pursue the quality policy of "CUSTOMER REQUIREMENTS AS STANDARD,CONTINUE INNOVATION FORWARD", Abide by the "integrity, cooperation, development, win-win" business philosophy, follow ISO9001 system standard control products quality strictly,use lean production runs through the whole manufacturing process.We won many awards such as "Provincial contract-honoring and Trust-keeping Unit", "Provincial technology-based Small and medium-sized Enterprise", "Municipal Key Industrial Enterprise", "Municipal Fine Management Demonstration Enterprise", "Municipal Safety Culture Construction Demonstration Enterprise" for many consecutive years.

When the spring tide surges, it is time to sailing.Looking forward to the future, all Shenghong staff revolve around new grand blueprint, taking transformation and upgrading as the main axis, taking innovation as the lead, and opening a new chapter of high-quality development with a striving attitude.





压铸车间一角 Casting Workshop



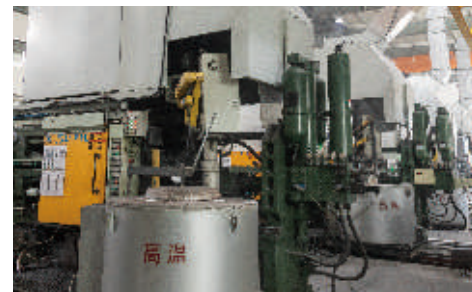
COMPANY CORNER 公司一角



集中保温炉
Concentrated holding furnace



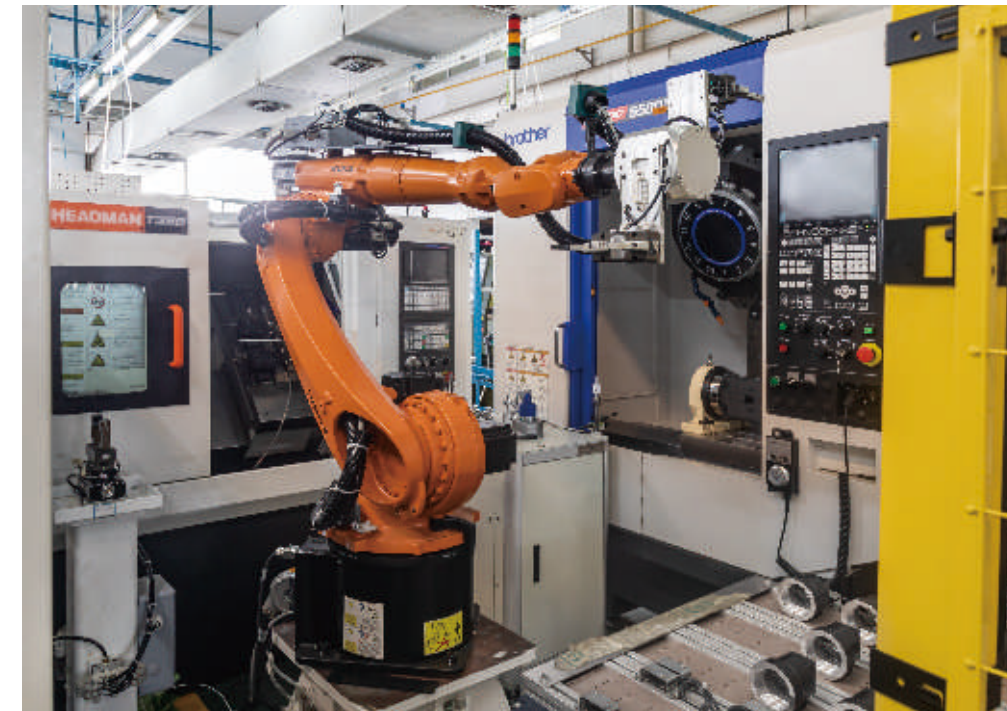
全自动配汤系统
Automatic feeding system



压铸机
Die Casting Machine



机械手去毛刺机
Manipulator deburring machine



自动化生产线
Automated production line



机加工车间一角
Machine workshop

全面推行精益生产方式使我们在高效率、低成本的同时生产出高质量的产品
Comprehensively implement the lean production mode make us within high efficiency, low cost and produce high quality products.



领航型的发展 做的再大，不忘服务

随着产品应用规模的不断增长，保障售前、售中、售后服务的规范化、有效性、及时性与客户利益密切相关，日益成为客户关注的焦点，“升宏”通过不断优化内部管理，通过一系列服务措施的实施，使服务质量得到完美体现。

With parts application scale growing, ensure standardization, effectiveness, timeliness of pre-sale, sale and after-sales service is closely related to customer's interests, it has increasingly become the focus of customer's concern. "SHENGHONG" through constantly optimize the internal management and the implementation of a series of series measures, service quality to get perfect embodiment.



仓库 Warehouse



NC车床
NC lathe



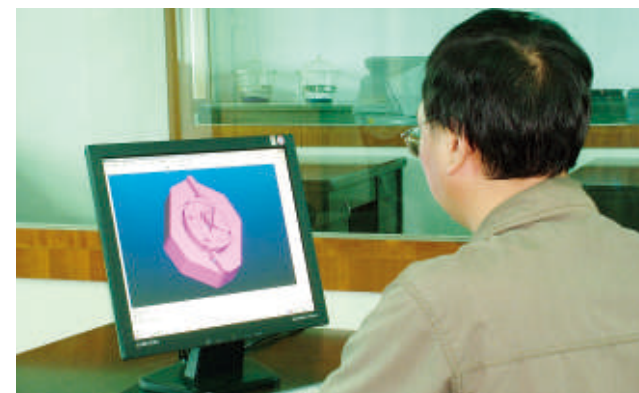
浸渗生产线
Impregnation production line



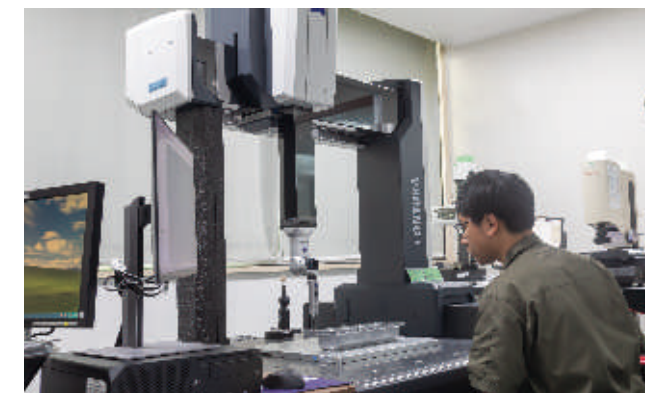
模具保管
Mold storage room

匠心智造, 创新致远

Ingenuity for manufacturing innovation
for far-reaching



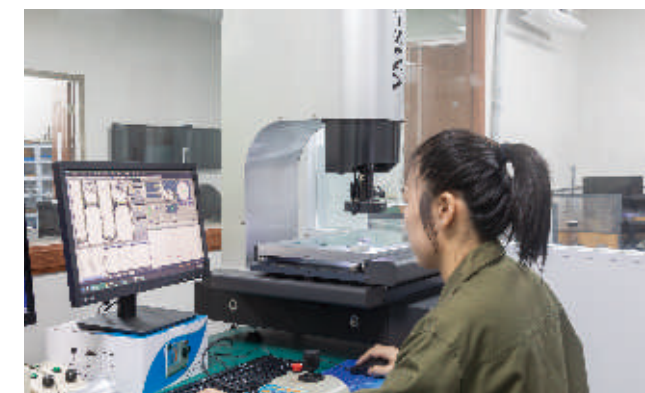
三维模具设计 3D model design



三坐标测量仪 CMM



轮廓仪 Profilometer



影像测量仪 Image measuring instrument



直读光谱分析仪
Direct reading spectrometer



工业CT
Industry CT



齿轮箱测功机
Gear box power test machine

创新，不能丢下了品质

公司坚持质量第一的方针，引进先进的设备，推行精益生产管理和TQC质量管理，不断提高产品的质量和品味，以品牌魅力和良好的信誉得到了顾客的信赖，从而增强了“升宏”的市场竞争力。

Our company persist in quality first policy, imported advanced equipment and implementation of lean production management&TQC management. Also, we're constantly improve part's quality&taste, with brand charm and good reputation win customer's trust, and, to enhance "SHENGHONG" marketing competitiveness.

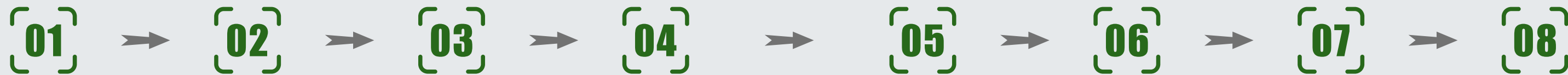
PRODUCT DEVELOPMENT PROCESS

产品开发过程



只要提供图纸或实物，我们会用心为您做好一切！

As long as you provide drawing or material object, we will do everything well for you.



客户图纸
Customer Inquiry With
Drawing

3D造型
3D Model Of Design

模具设计
Mold Design

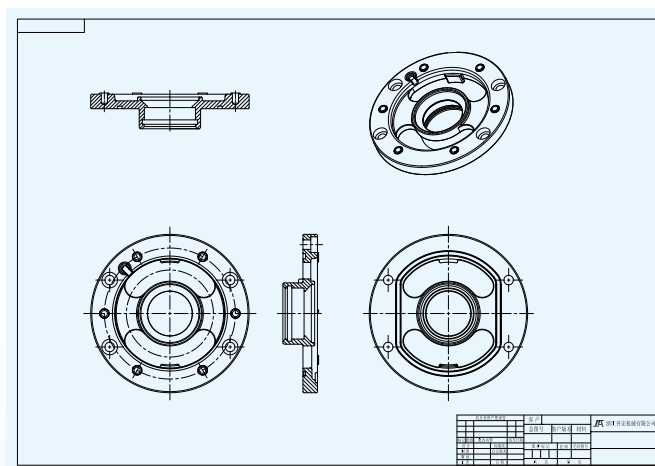
压铸模拟分析
Mold Flow Analysis

压铸模制造
Die-casting Mold Manufacturing

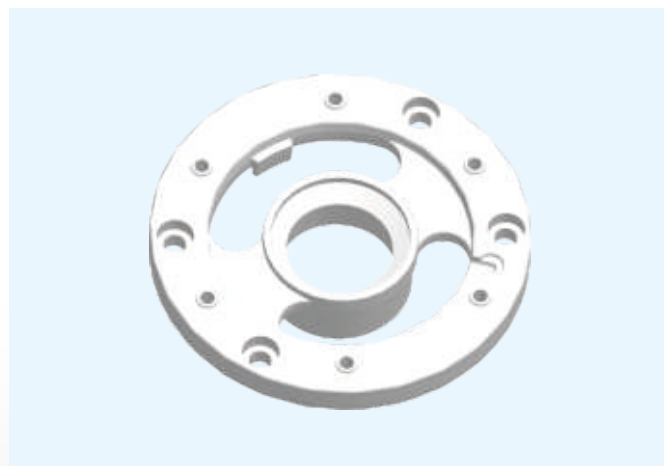
夹具设计
Fixture Design

夹具制造
Fixture Manufacture

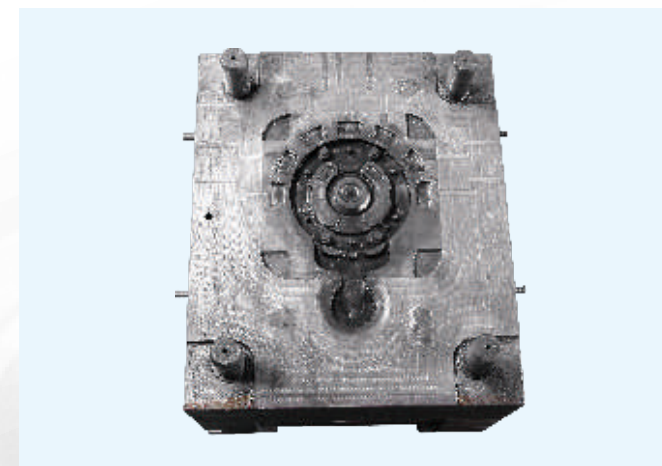
产品检测
Product Testing



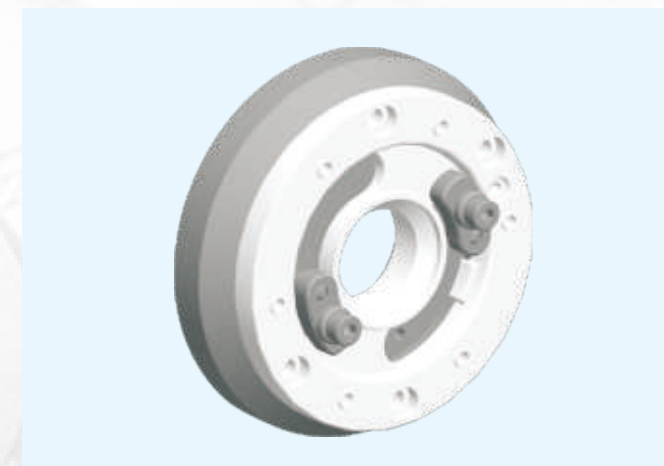
客户图纸
Customer inquiry with drawing



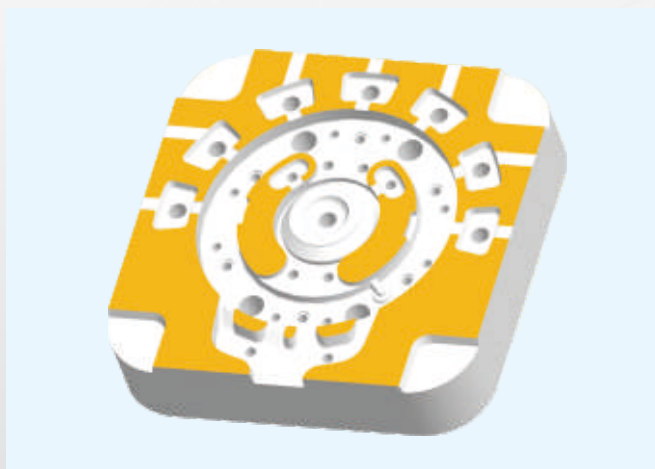
3D造型
3D model of design



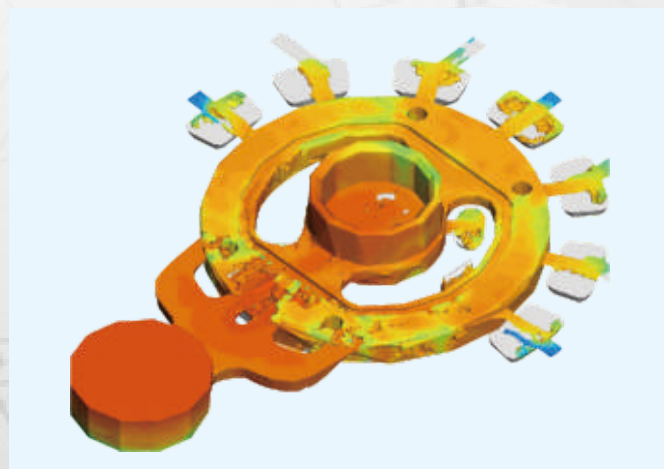
压铸模制造
Die-casting mold manufacturing



夹具设计
Fixture design



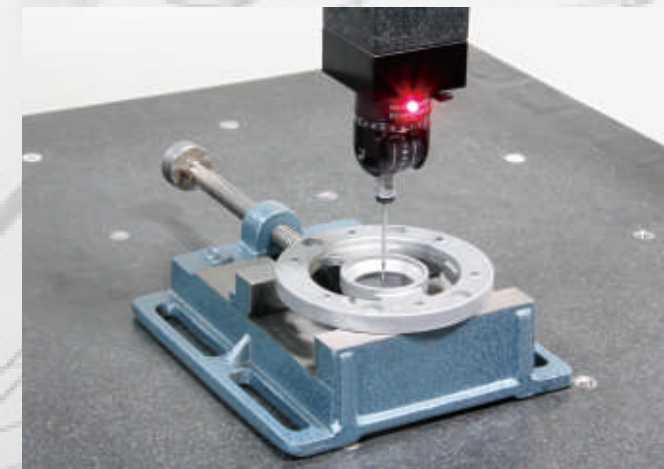
模具设计
Mold design



压铸模拟分析
Mold flow analysis



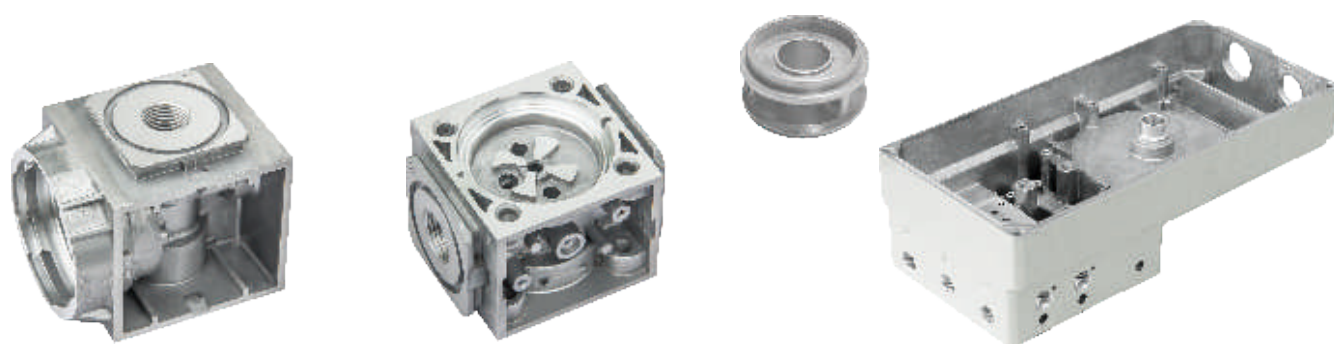
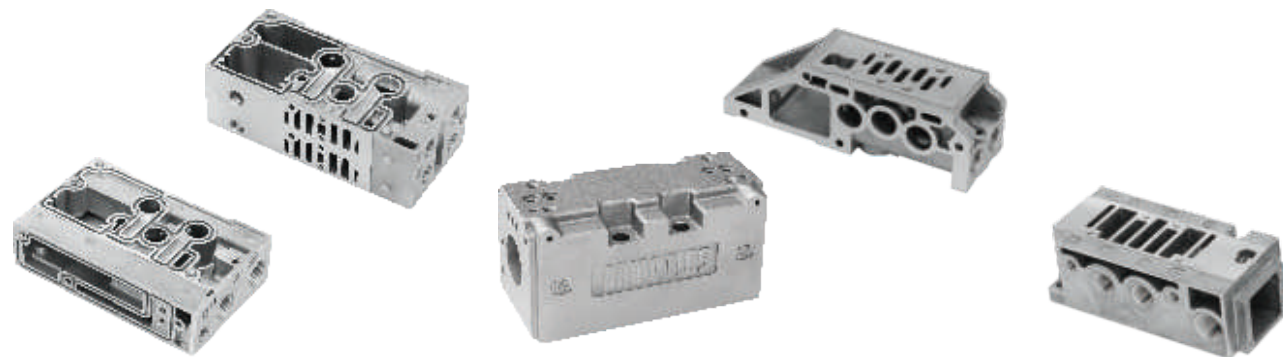
夹具制造
Fixture manufacture



产品检测
Product testing

气动元件配件系列

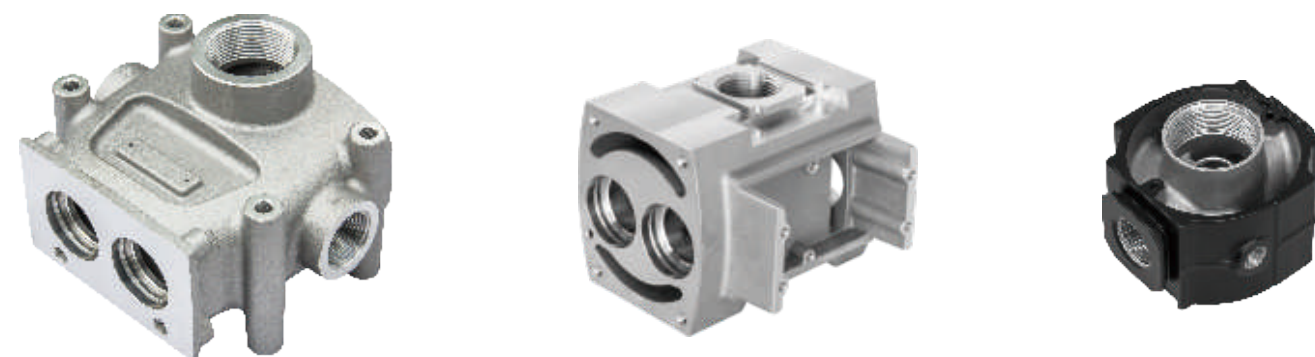
Pneumatic components accessories series



本公司可根据客户的需求, 可提供阳极氧化、烤漆、喷塑等处理服务
We can provide anodizing, painting, powder coating and other services according to your requirements.

气动元件配件系列

Pneumatic components accessories series

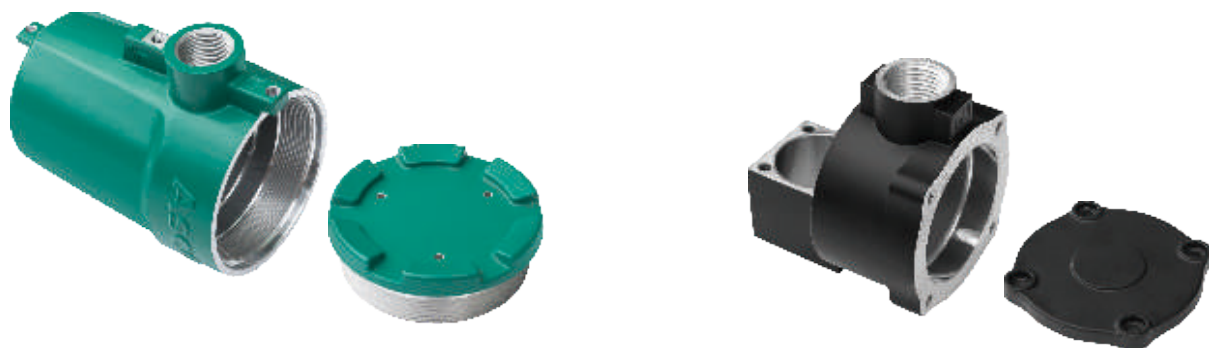


本公司可根据客户的需求, 可提供阳极氧化、烤漆、喷塑等处理服务
We can provide anodizing, painting, powder coating and other services according to your requirements.



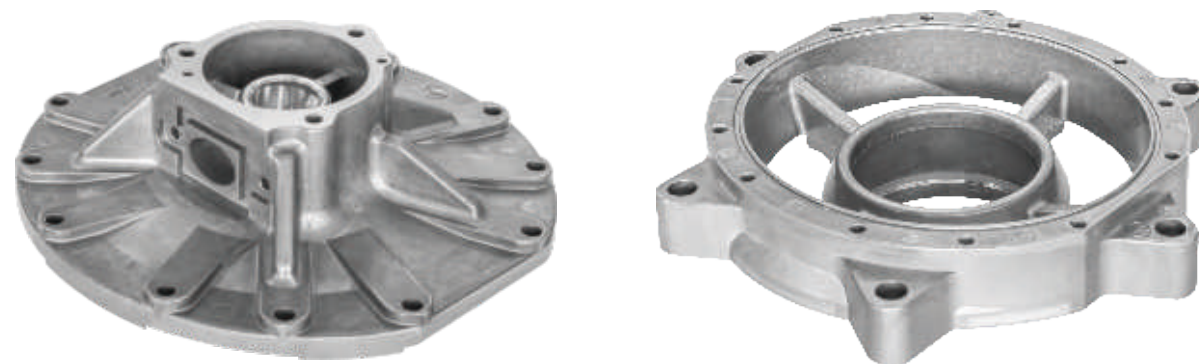
接线盒配件

Junction box accessories



流体控制配件

Fluid control accessories



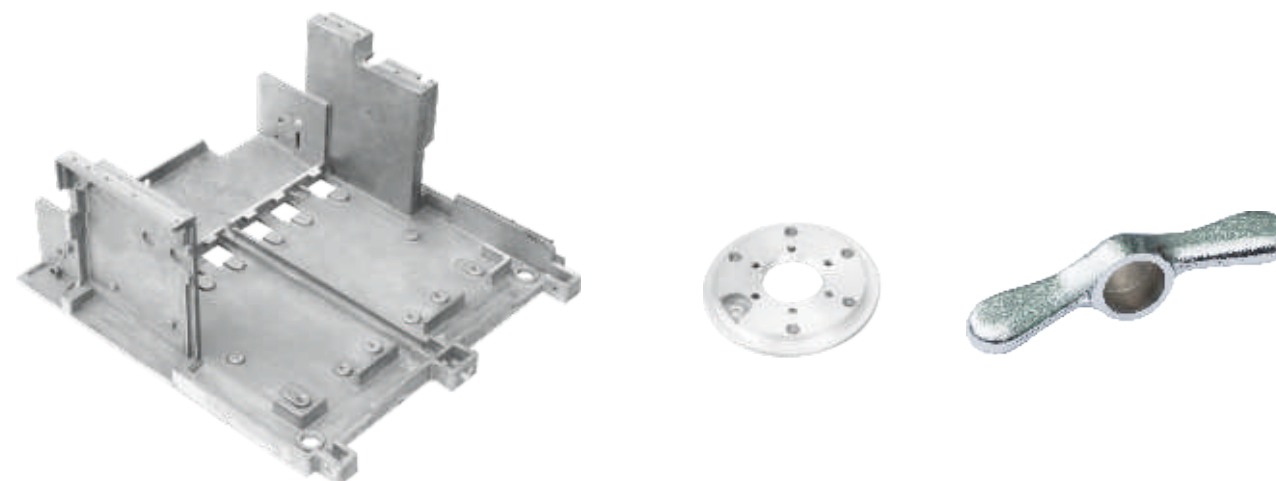
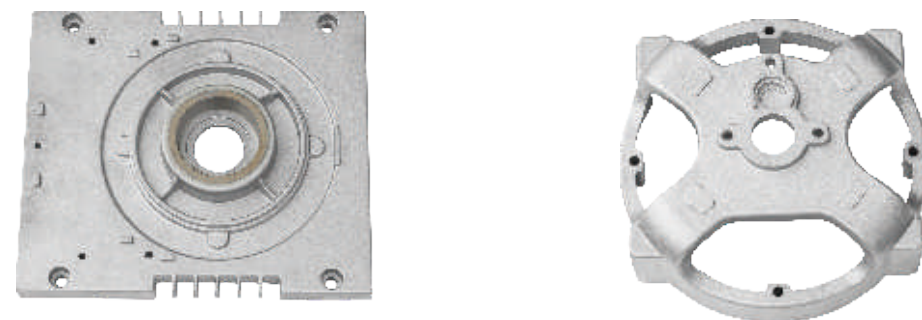
汽摩配件

Auto accessories



真空泵/仪表配件

Vacuum pump/instrument accessories



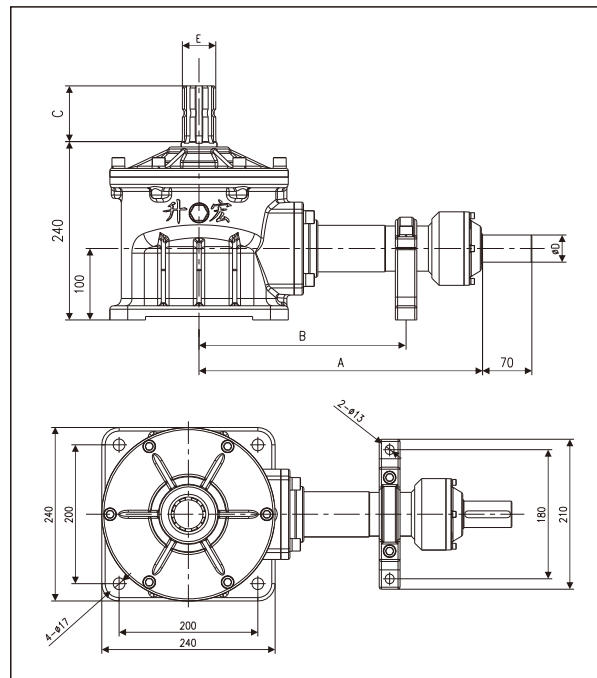
本公司可根据客户的需求, 可提供阳极氧化、烤漆、喷塑等处理服务
We can provide anodizing, painting, powder coating and other services according to your requirements.

本公司可根据客户的需求, 可提供阳极氧化、烤漆、喷塑等处理服务
We can provide anodizing, painting, powder coating and other services according to your requirements.

旋耕机转角齿轮箱系列产品

Rotary cultivator angle gear box series product

结构图/Structure



产品概述/Product overview

1. 弧形锥齿轮转角齿轮箱标准化, 多元化, 速比2.33:1, 平均效率大于98%。
 2. 弧形锥齿轮可以正反转, 低速或高速传动平稳。
 3. 轴、箱体均采用高强度的材料, 体积小, 重量轻, 承受力大。
 4. 弧形锥齿轮按国际先进标准生产, 震动小, 噪音低等特点。
- 1.Arc cone angle gear box is standardized.varieties,speed rate2.33:1,average rate>98%.
- 2.Arc cone gear wheel can operate reliability on two side,with low rate or high rate.
3. The shaft and box are made of high-strength materials, small size, light weight and large bearing capacity.
- 4.Arc-shaped gear has product according with international advanced standard,has advantages of little vibration,low noise and ect.

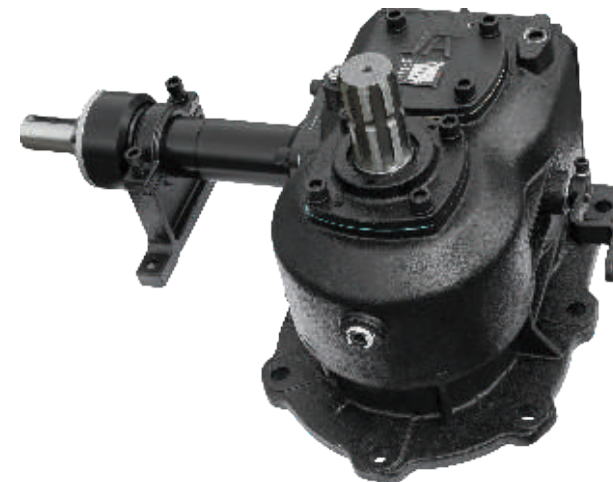
尺寸表/Size Comparison

型号 Type	减速比 Reduction ratio	尺寸对照表/Size comparison					
		A	B	C	ΦD	E	齿轮模数
SHX-35-X	2.33:1	-	-	-	Φ35	8×32×38×6	5
SHX-38-X	2.33:1	-	-	-	Φ38	8×42×48×8	6.5

A.B.C 尺寸可按客户需求定制
A.B.C dimension can be customization according with buyer requirements

变速齿轮箱系列

Speed change gearbox series



产品概述/Product overview

1. 直齿锥齿轮转角齿轮箱标准化, 多元化, 高速挡: 2.151:1, 低速挡: 2.805:1, 平均效率大于98%。
2. 直齿锥齿轮可以正反转, 低速或高速传动平稳。
3. 轴、箱体均采用高强度的材料, 体积小, 重量轻, 承受力大。
4. 直齿锥齿轮按国际先进标准生产, 震动小, 噪音低等特点。

This corner gearbox has the following features:

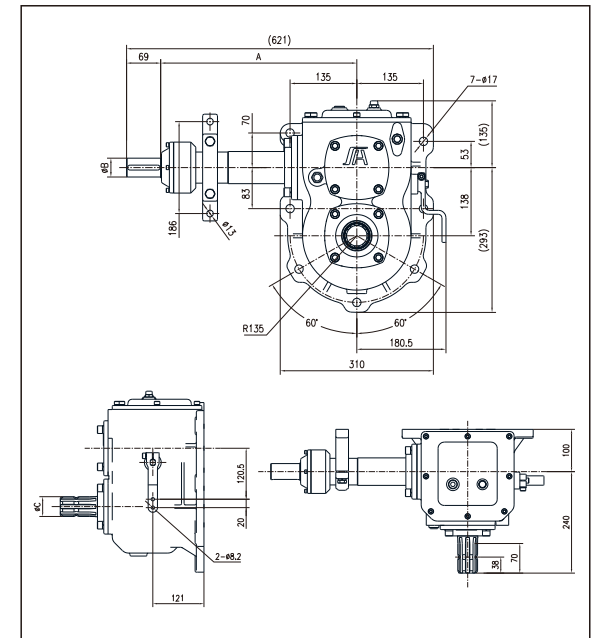
1. Straight bevel gear corner gearbox standardized, diversified, high speed gear: 2.151:1, low speed gear: 2.805:1, average efficiency greater than 98%.
2. The straight bevel gear can run forward and reverse, low speed or high speed transmission smooth.
3. The shaft and box are made of high-strength materials, small size, light weight and large bearing capacity.
4. Straight bevel gear produce according to international advanced standards, with low vibration and low noise characteristics.

尺寸表/Size Comparison

型号 Type	减速比(低速) Reduction ratio (Low speed)	减速比(高速) Reduction ratio (High speed)	尺寸对照表/Size comparison			
			A	B	C	锥齿轮模数
SHFD-1	2.805:1	2.151:1	397	Φ38	8×42×48×8	7
SHFD-2	2.805:1	2.151:1	236	Φ38	8×42×48×8	7

A.B 尺寸可按客户需求定制
A.B dimension can be customization according with buyer requirements

结构图/Structure

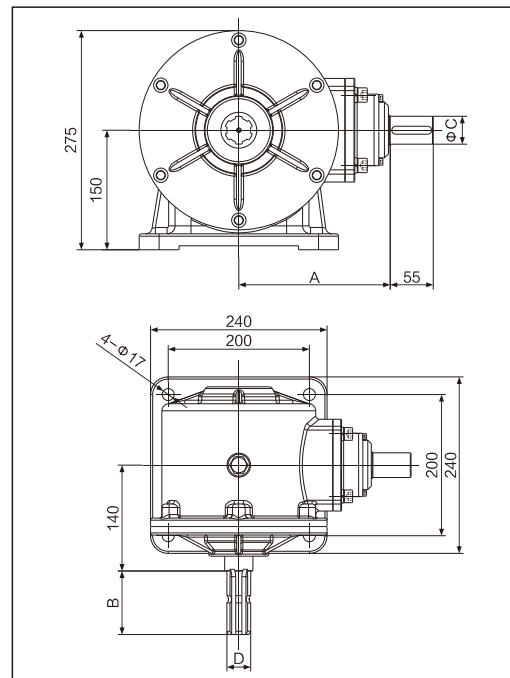


旋耕机转角齿轮箱系列产品

Rotary cultivator angle gear box series product



结构图/Structure



产品概述/Product overview

1. 弧形锥齿轮转角齿轮箱标准化, 多元化, 速比2.33:1, 平均效率大于98%。
2. 弧形锥齿轮可以正反运转, 低速或高速传动平稳。
3. 轴、箱体均采用高强度的材料, 体积小, 重量轻, 承受力大。
4. 弧形锥齿轮按国际先进标准生产, 震动小, 噪音低等特点。

1. Arc cone angle gear box is standardized.varieties,speed rate2.33:1,average rate>98%.
2. Arc cone gear wheel can operate reliability on two side,with low rate or high rate.
3. The shaft and box are made of high-strength materials, small size, light weight and large bearing capacity.
4. Arc-shaped gear has product according with international advanced standard,has advantages of little vibration,low noise and ect.

尺寸表/Size Comparison

型号 Type	减速比 Reduction ratio	尺寸对照表/Size comparison				
		A	B	ΦC	D	齿轮模数
SHX-G35-X	2.33:1	-	-	Φ35	8X32X38X6	5
SHX-G38-X	2.33:1	-	-	Φ38	8X42X48X8	6.5

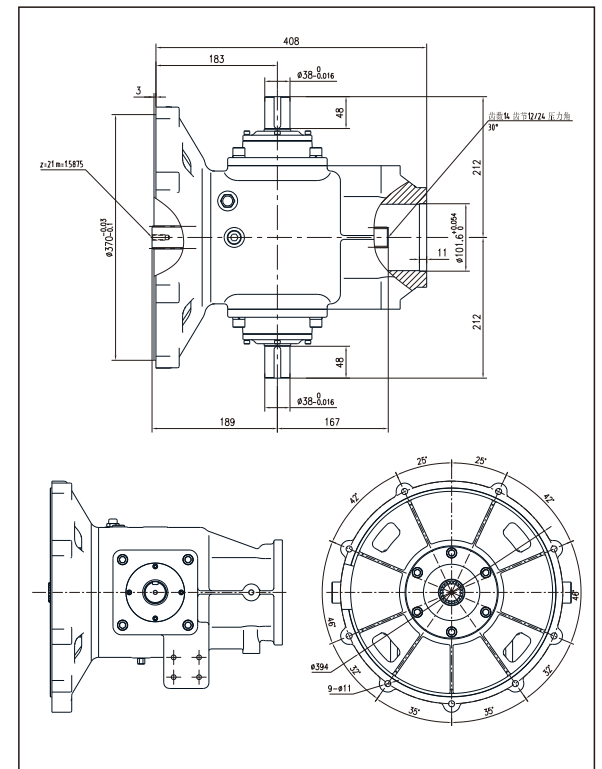
A,B尺寸可按客户需求定制
A.B dimension can be customization according with buyer requirements

玉米收割机转角齿轮箱系列产品

Corn harvester angle gear box series product



结构图/Structure



产品概述/Product overview

此转角齿轮箱具有以下特点:

1. 弧形锥齿轮转角齿轮箱标准化, 多元化, 传动比1.235:1, 平均效率大于98%。
2. 弧形锥齿轮可以正反运转, 低速或高速传动平稳。
3. 轴、箱体均采用高强度的材料, 体积小, 重量轻, 承受力大。
4. 弧形锥齿轮按国际先进标准生产, 震动小, 噪音低等特点。

Angle gear box has advantages as below:

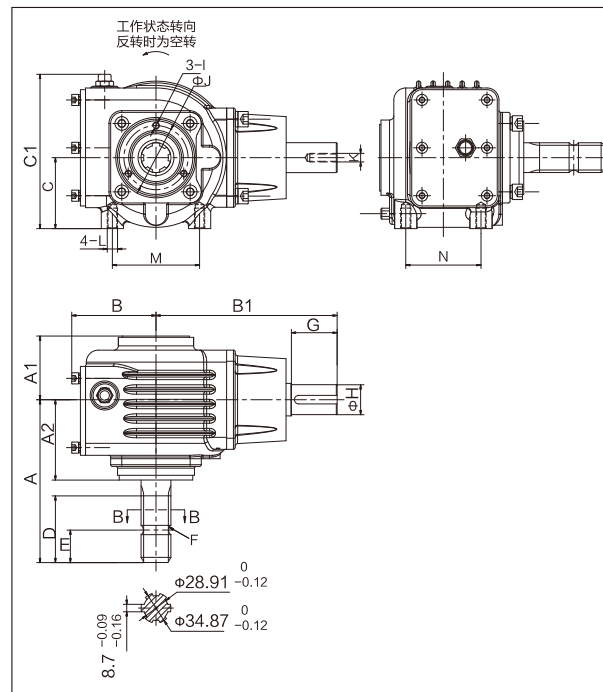
1. Arc cone angle gear box is standardized.varieties,gear ratio 1.235:1, average rate>98%.
2. Arc cone gear wheel can operate reliability on two side,with low rate or high rate.
3. The shaft and box are made of high-strength materials, small size, light weight and large bearing capacity.
4. Arc-shaped gear has product according with international advanced standard,has advantages of little vibration,low noise and ect.

JH滑移式割草机齿轮箱系列产品

Jh slip type mower gearbox series products



结构图/Structure



产品概述/Product overview

1. 弧形锥齿轮转角传动箱标准化, 多种化, 速比1:2.77, 平均效率大于98%。
2. 弧形锥齿轮可以正反转, 低速或高速传动平稳。
3. 轴、箱体均采用高强度的材料, 体积小, 重量轻, 承受力大。
4. 弧形锥齿轮按国际先进标准生产, 震动小, 噪音低等特点。
5. 内置棘轮机构, 反转时空转, 输出轴不转动。

1. Arc cone angle gear box is standardized, varieties, speed rate: 1:2.77, average rate > 98%.
2. Arc cone gear wheel can operate reliability on two sides, with low rate or high rate.
3. The shaft and box are made of high-strength materials, small size, light weight and large bearing capacity.
4. Arc-shaped gear has product according with international advanced standard, has advantages of little vibration, low noise and etc.
5. Built-in ratchet mechanism, idling when reversed, output shaft does not rotate.

尺寸表/Size Comparison

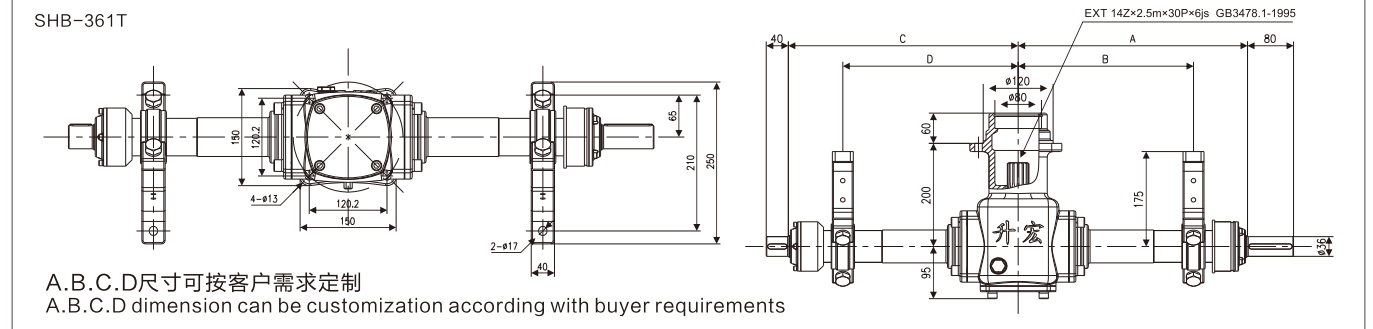
型号 Type	A	A1	A2	B	B1	C	C1	D	E	F	G	H	I	J	K	L	M	N	齿轮模数	传动比
JH	190.5	74.5	94	98.5	211.9	83	180.5	78	38	R6.8	53.5	35	M8	75	M10x1.25	M12x1.25	102	88	3	1:2.77

收割机转角齿轮箱系列产品

Harvester angle gear box series product



结构图/Structure



产品概述/Product overview

SHB分动箱专为玉米收割机而研发, 经过了收割机制造厂家的实际应用, 可靠的性能已经得到了市场充分的肯定。

此转角齿轮箱具有以下特点:

1. 弧形锥齿轮转角齿轮箱标准化, 多元化, 速比1.29:1, 平均效率大于98%。
2. 弧形锥齿轮可以正反转, 低速或高速传动平稳。
3. 轴、箱体均采用高强度的材料, 体积小, 重量轻, 承受力大。
4. 弧形锥齿轮按国际先进标准生产, 震动小, 噪音低等特点。

SHB series angle gear box is design for vertical axial flow combine harvester which use for rice-wheat harvest. After the practical application of harvester manufacturers, and its reliable functions have approved by market.

Angle gear box has advantages as below:

1. Arc cone angle gear box is standardized, varieties, speed rate 1:1, average rate > 98%.
2. Arc cone gear wheel can operate reliability on two side, with low rate or high rate.
3. The shaft and box are made of high-strength materials, small size, light weight and large bearing capacity.
4. Arc-shaped gear has product according with international advanced standard, has advantages of little vibration, low noise and ect.

