



Mr.pan Wechat
微信二维码



WeChat public number
微信公众号



Corporate website
企业官网

WENLING OUYI ELECTRIC CO.,LTD. 温岭欧亿电器有限公司

地址: 浙江省温岭市大溪镇注塑园区
Add: Injection Zone, Daxi Town, Wenling, Zhejiang, China.

Tel: 0086-576-86313477 Fax: 0086-576-86313499
MOBILE: 0086-13566861955 0086-13858694095

E-mail: info@llaspa.com sales@llaspa.com sale2018@llaspa.com



Products shall be subject to any changes without additional notices.



Everybody is responsible for environmental protection, sustainable development!



www.llaspa.com
ISO9001:2015 CE

DIGITAL

Pump Controller

Focus On The
Pump Pressure Controller &
Water Pump



LLASPA®

PRODUCT SERIES

DC/AC AUTOMATIC
PUMP CONTROL

(220V/380V)WATER
LEVEL CONTROLLER

DIGITAL CONTROL

FLOAT SWITCH
PRESSURE SWITCH



LLASPA BRAND STORY

LLASPA IS WENLING OUYI ELECTRIC CO.,LTD LUXURY BRAND FOR THE CONTROLLER, LLASPA CAMES from Wenling, the dawn city of the Oriental Century in China.

The company adheres to the principle of "healthy drinking water, high quality, high standard service, and providing quality products to customers at reasonable cost". The company adopts advanced equipment and ISO9001 standard production and manufacture of high-quality controller



INTRODUCTION

WENLING OUYI ELECTRIC CO.,LTD. Produce the automatic pump control and mechanical pressure switch, float switch, air compressor switch.

We own the brand 雅士霸LLASPA®, We have 9 series electric switch and ten series pressure switch, we also have the export license and VAT certificate, And all series pump control have the CE certificate, and IEC report, Our company address:Injection Zone, Daxi Town, Wenling, Zhejiang China.

温岭欧亿电器有限公司专注于水泵压力控制器, 主营水泵电子压力开关, 水泵机械压力开关, 浮球开关, 以及各种水泵配件。

我司拥有雅士霸LLASPA® 品牌, 旗下有9大类水泵电子压力开关, 10大类机械开关, 同时经营浮球开关等水泵配件, 我司拥有自营进出口权和一般纳税人资格, 公司坐落在温岭市大溪镇注塑园区。



www.llaspa.com

ISO9001:2015 CE

专注于水泵压力控制器和
水泵配件

Focus On The Pump Pressure Controller
Water Pump Control

DC/AC AUTOMATIC
PUMP CONTROL

(220V/380V)WATER
LEVEL CONTROLLER

PRESSURE SWITCH

FLOAT SWITCH



PRESSURE SWITCH SERIES

压力开关系列

- 02 LS-16 Digital sensor
- 03 LS-16 Mechanical sensor
- 04 LS-15 Digital sensor
- 06 LS-1 Pressure control
- 07 LS-14 Digital Switch
- 07 LS-12 Submersible pump control
- 08 LS-3/3B/4/5 New design
- 09 LS-2 Pressure control
- 09 LS-30 Pressure control
- 10 LS-6/6A/6B/6B Plus Pressure control
- 12 LS-8 Pressure control
- 12 LS-8A Pressure control

MECHANICAL PRESSURE SWITCH SERIES

机械压力开关系列

- 13 MC-1 For water pump
- 13 MC-2 Lower water level protect function
- 14 MC-3/3A/3B/3C Pressure control
- 14 MC-8 For water pump
- 15 MC-9/PSG-1 Pressure control
- 15 MC-9A For dirty water pump
- 16 MC-5 For water pump
- 16 MC-5A For air compressor
- 16 MC-6 For air compressor
- 17 MC-7 For air compressor
- 17 MC-11 For Air compressor and water pump
- 18 MC-12/13 Pressure control
- 18 MC-14 Pressure control
- 18 MC-15 Pressure control
- 19 MLSP Single pressure control specification
- 19 MLSP Dual pressure controller specification

FLOAT SWITCH

浮球开关

- 20 FLO Float Switch

OIL PRESSURE GAUGE

油表压力表

- 21 Oil Pressure Gauge
- 21 Pressure Gauge (axial)
- 22 Pressure Gauge(The radial)

PRESSURE TANKS AND ACCESSORIES

压力罐及配件

- 23 Pressure tank
- 25 Circuit board
- 27 Power cable and plug

300+ Wholesaler

100+ Distributors

ERP Enterprise Resource Planning



SERVING THE WORLD

After years of domestic and foreign market development, Ouyi company set up a sound marketing network, has a stable customer groups, has more than 300 wholesalers and more than 100 distributors nationwide, widely covered throughout the country. Fully penetrate all areas of customers.

Through the docking company ERP system, the regional distribution center has the complete logistics distribution and the Logistics Management Service system, realizes the headquarters centralized order, the long-distance control each region distribution Center's logistics distribution, guarantees the information flow, the logistics and the capital flow efficient operation. To provide customers with more timely and thoughtful service.

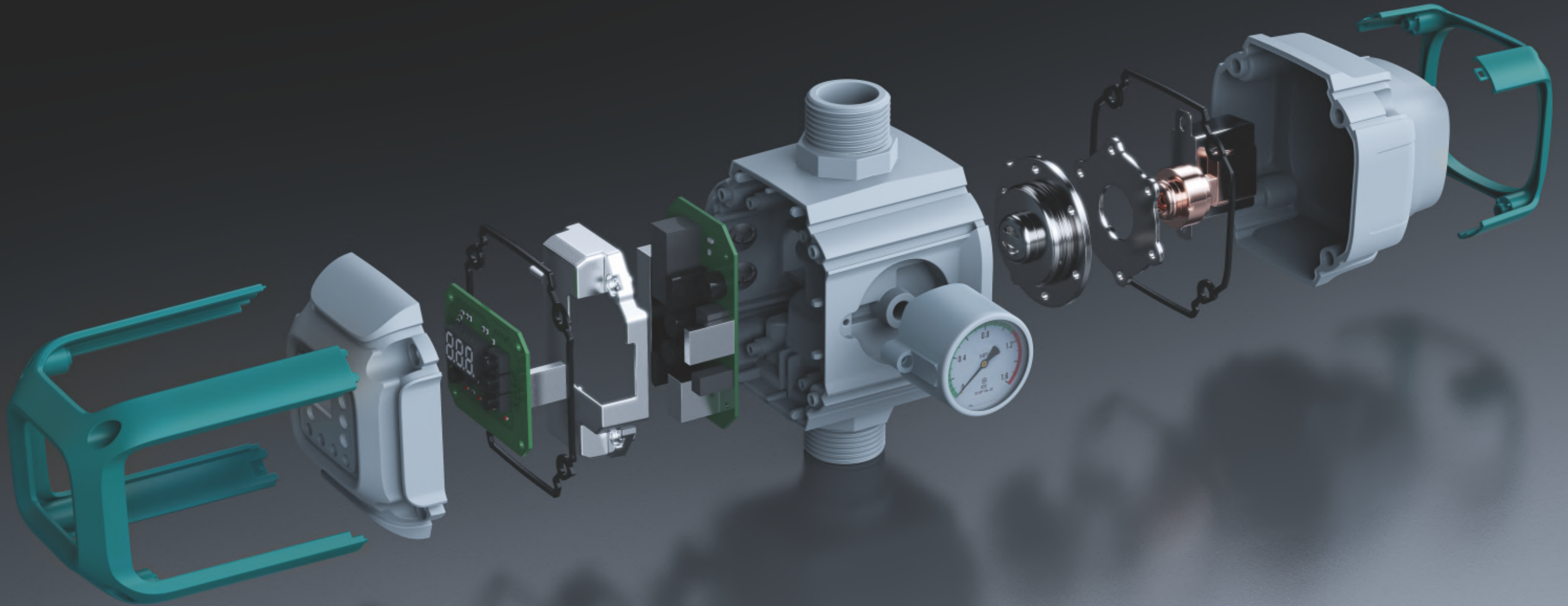
经过多年的国内外市场开拓，欧亿公司建立起了完善的营销网络，拥有稳定的客户群体，已在全国拥有300多家批发商和100多家分销商，广泛覆盖全国各地，充分渗透各领域客户。通过对接公司ERP系统，区域配送中心拥有完整的物流配送和物流管理等服务体系，实现总部集中定单，远程调控各区域配送中心的物流配送，确保信息流，物流和资金流的高效运营。为客户提供更及时周到的服务。



DIGITAL PRESSURE SENSOR TECHNOLOGY

Advance quality,
High precision pressure adjustment

— Innovation is our mission to meet the
unmet market demand



DIGITAL
PUMP CONTROL

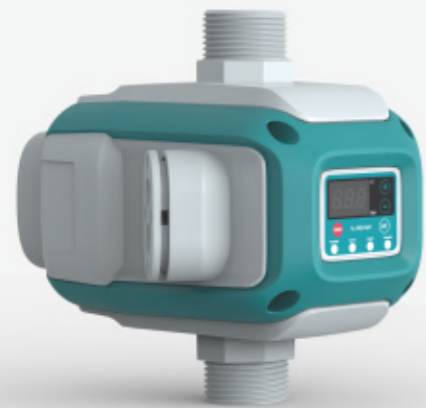
| **LS Series**

LS-16 DIGITAL SENSOR

With flow dry protection

Overview of features

Digital pressure control new dual pressure sensor automatic pump controller for 220V submersible pump, this device can protect the motor not burn. this device can set the stop pressure by customer ,so can set the safe pressure for protect the water pipe not broken, if the pipe water pressure reach setting data, it will be stop the water pump.



1.1KW



2.2KW

ADVANTAGES

Can use for 220V Submersible Pump Available

LS-16 digital with 1" thread. inside have built-in spring check valve. To prevent internal leakage, it can be installed by horizontal or vertical.



LS-16					
电压	Voltage	110V/220V-240V	接口	Jointscrew	R1
频率	Frequency	50/60Hz	保护等级	Protection Grade	IP65
额定电流	Rated Current	10A	温度	Temperature	100°C
最大功率	Max Power	1.1kW/2.2kW	数量	PCS/CTN	12pcs
最大停止压力	Max Shutdown Pressure	9.8bar	净重	N.W.	10.32kg
流量	Flow	35L/H-500L/H	毛重	G.W.	12.19kg
启动压力	Start Pressure	0.5-6bar(adjustable)	包装尺寸	Packing Size	1.1KW: 42.5×37×35.2cm 2.2KW: 44×38.5×34cm
停机压力	Shutdown Pressure	1.3-9.8bar(adjustable)			

i Divided into Digital and Mechanical

LS-16 MECHANICAL SENSOR

With Flow Dry Protection

ADVANTAGES

Can use for 220V Submersible Pump Available

LS-16 mechanical with 1" thread. inside have built-in spring check valve.

To prevent internal leakage, it can be installed by horizontal or vertical.



PRESSURE RANGE 压力范围

公斤BAR	1.4-2.8	2.1-4.5	2.8-4.2	4.2-5.5
PSI	20-40	30-50	40-60	60-80

1BAR=0.1MPA=14.5PSI

PSI 单位lb/in2 磅/升

LS-16					
电压	Voltage	110V/220V-240V	保护等级	Protection Grade	IP65
频率	Frequency	50/60Hz	温度	Temperature	60°C
最大电流	Max Current	10A	包装尺寸	Packing Size	42.5×37×35.2cm
最大功率	Max Power	1.1kw	数量	PCS/CTN	12pcs
最大工作压力	Max Working Pressure	10bar	净重	N.W.	10.32kg
接口	Jointscrew	R1	毛重	G.W.	12.19kg



Divided into Digital and Mechanical

LS-15 DIGITAL SENSOR

With pressure dry protection

www.laspa.com
Wenling Ouyi Electric Co.,LTD.

LASPA®



DETAILED SPECIFICATIONS 规格详解

螺纹规格 Thread specifications	1/8	1/4	3/8	1/2	3/4	1	1-1/4	1-1/2	2
俗称 Commonly called	1分	2分	3分	4分	6分	1寸	1.2寸	1.5寸	2寸
其它称呼 Other titles	DN6	DN8	DN10	DN15	DN20	DN25	DN32	DN40	DN50
外螺纹大小 External thread size	9.5mm	12.5mm	16.2mm	20.3mm	25.7mm	32.5mm	41.3mm	47.8mm	59.6mm
内螺纹大小 Internal thread size	8.8mm	11.5mm	15.3mm	19.5mm	24mm	30.5mm	39.5mm	46.3mm	56.6mm
误差 Error	0.2mm	0.3mm	0.3mm	0.3mm	0.5mm	0.5mm	0.5mm	0.5mm	0.5mm

Fit for as above different inlet and outlet pump

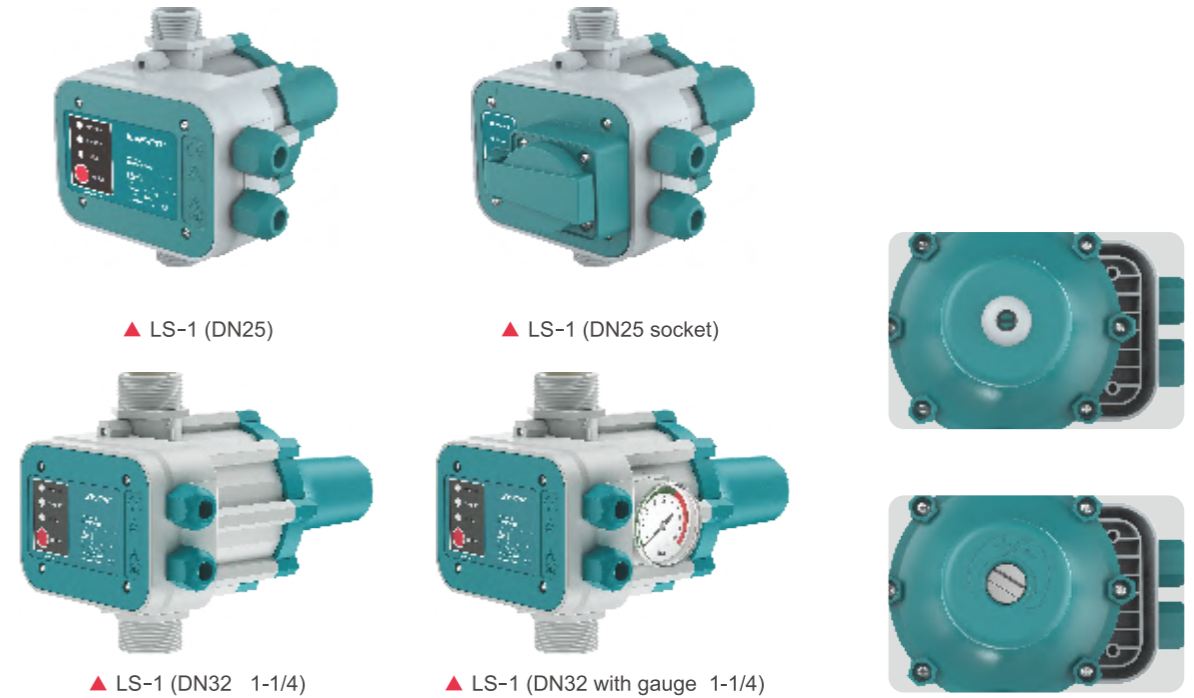
LS-15					
额定电压	Rated Voltage	98-240V	温度	Temperature	60°C
频率	Frequency	50/60Hz	压力范围	Pressure Range	0-10bar
最大电流	Max Current	16A	包装尺寸	Packing Size	68.5×34.5×45cm
最大功率	Max Power	2.2kW	数量	PCS/CTN	50pcs
保护等级	Protection/Grade	IP65	净重	N.W.	22kg
接口	Jointscrew	G1/4" G1/2" G3/8"	毛重	G.W.	26kg

PRESSURE CONTROL

Smart: automatic control of the operation of the pump, when the water shortage automatically stop the pump.
 Safety: The outlet and inlet use the engineering grade environmental friendly materials, they are safe and durable.
 Plug and play: simple to operate, easy to use.
 Low noise: parts standardized, cost-effective, more stable.

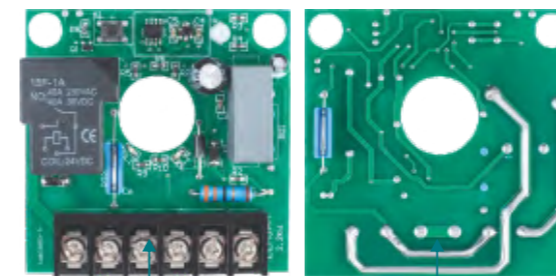


LS-1 PRESSURE CONTROL



LS-1					
电压	Voltage	AC 220/110V DC 12/24/36/48V	保护等级	Protection/Grade	IP65
频率	Frequency	50/60Hz	温度	Temperature	90°C
最大电流	Max Current	10/16/25A	包装尺寸	Packing Size	DN25: 52×47×38cm
最大功率	Max Power	1.1KW/1.5KW/2.2KW	数量	PCS/CTN	DN25: 12pcs
启动压力	Start Pressure	0.8/1.2/1.5/2.2bar	净重	N.W.	DN25: 14.64kg
最大工作压力	Max Working/Pressure	10bar	毛重	G.W.	DN25: 18.84kg
接口	Jointscrew	R1/R1-1/4			

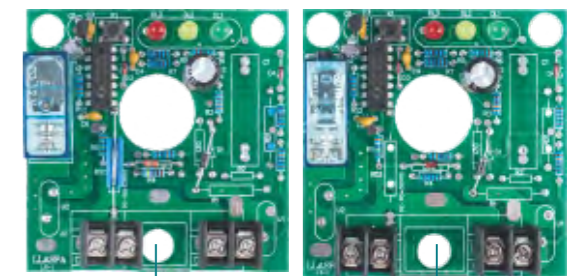
2.2KW 3HP 40(25)A PRESSURE CONTROL



LS-1 2.2KW Auto Restart

- 1.Connector:25A
- 2.Max Rate Current:40(25A)
- 3.Max Pressure:10bar
- 4.Rate Voltage:220-240V
- 5.Max Power:3HP2.2kW
- 6.Auto Restart Function After No Water

CONTROL FOR DC PUMP



DC12V/DC36V

DC24V/DC48V

- Voltage DC 12V 24V 36V 48V
 Current 12V: 15A 24V: 8A
 Max Power: 200W
 Max. working pressure: 10BAR
 Starting pressure: 0.8 1.3 1.5BAR
 Water pump dust requirements: ≥25M
- Interface: G1 G1-1/4
 Protection class: IP65
 Temperature: 90°
 Packing size: 52*47*38
 Quantity: 12

LS-14 DIGITAL SWITCH



LS-14					
电压	Voltage	220V	温度	Temperature	60°C
频率	Frequency	50/60Hz	压力范围	Pressure Range	0-10bar
最大电流	Max Current	10A	包装尺寸	Packing Size	46×25×51cm
最大功率	Max Power	1.1kW	数量	PCS/CTN	50pcs
接口	Jointscrew	G1/4, G3/8, G1/2	净重	N.W.	20.88kg
保护等级	Protection/Grade	IP65	毛重	G.W.	26kg

LS-12 SUBMERSIBLE PUMP CONTROL

CONDENSATEUR/CAPACITOR(QF)

15	18	20	25	30	35	40	45	50	55	60	65	70	75	80	85
----	----	----	----	----	----	----	----	----	----	----	----	----	----	----	----

PROT.THERM./THERMAL PROTEC. AMP

4	5	6	7	8	9	10	11	12	13	14	15	16	18	20	25	30
---	---	---	---	---	---	----	----	----	----	----	----	----	----	----	----	----

Model	LS-12-0.75	LS-12-0.75	LS-12-0.75	LS-12-0.75	LS-12-0.75
Power	0.75	0.75	0.75	0.75	0.75
Rated current	6	6	6	6	6
Capacitor	25	25	25	25	25
Thermal protector	10	10	10	10	10



▲ Control Box ▲ LS-12 Control panel ▲ LS-12 (220V) ▲ LS-12 (380V)

LS-12					
电压	Voltage	Three Phase 380V	额定电压	Voltage	220V-240V
功率	Power	0.75-4KW / 0.75-7.5KW / 0.75-11KW / 0.75-15KW	功率	Power	0.75-2.2kW
频率	Frequency	50/60Hz	频率	Frequency	50/60Hz
包装尺寸	Packing Size	49×25.5×32.2cm	包装尺寸	Packing Size	51.5×38.5×58cm
数量	PCS/CTN	6pcs	数量	PCS/CTN	12pcs
净重	N.W.	5.82kg	净重	N.W.	15.1kg
毛重	G.W.	6kg	毛重	G.W.	16.1kg

LS-3/3B/4/5 NEW DESIGN

www.laspa.com
Wenling Ouyi Electric Co.,LTD. | **ILASPA®**



▲ LS-3 (Adjustment) ▲ LS-3B (Adjustment)



▲ LS-4 (Adjustment) ▲ LS-4 (Not adjust) With europe socket



▲ LS-5 (Not adjust)

Optionals:

- Starting pressure is adjustable during installation, adjustment range: 1.2bar-3.0bar.
- Color: as customer require.
- Power cable length can choose according to customers' needs.

LS-3/3B/4/5					
电压	Voltage	220V/110V	温度	Temperature	90°C
频率	Frequency	50/60Hz	压力范围	Pressure Range	0.8/1.5/2.2bar
最大电流	Max Current	10A	包装尺寸	Packing Size	LS-4: 55×52.5×24.7 LS-3/5: 53×48×24.5cm
最大功率	Max Power	1.1kW	数量	PCS/CTN	12pcs
接口	Jointscrew	R1	净重	N.W.	LS-4: 15.6kg LS-3/5: 13.6kg
保护等级	Protection/Grade	IP65	毛重	G.W.	LS-4: 18kg LS-3/5: 16.4kg

LS-2



LS-2					
电压	Voltage	220/110V	保护等级	Protection/Grade	IP65
频率	Frequency	50/60Hz	温度	Temperature	90°C
最大电流	Max Current	10A	包装尺寸	Packing Size	42×32.5×21.5cm
最大功率	Max Power	1.1kW	数量	PCS/CTN	12pcs
启动压力	Start Pressure	1.0-3.5bar	净重	N.W.	6.12kg
最大工作压力	Max Working/Pressure	10bar	毛重	G.W.	8.62kg
接口	Jointscrew	G1			

LS-30



LS-30					
电压	Voltage	220/110V	保护等级	Protection/Grade	IP65
频率	Frequency	50/60Hz	温度	Temperature	90°C
最大电流	Max Current	10A	包装尺寸	Packing Size	44×39×31.5cm
最大功率	Max Power	1.1kW	数量	PCS/CTN	12pcs
启动压力	Start Pressure	1.0-3.5bar	净重	N.W.	9.75kg
最大工作压力	Max Working/Pressure	10bar	毛重	G.W.	14.2kg
接口	Jointscrew	G1			

LS-6/6A/6B/6B PLUS

www.laspa.com
Wenling Ouyi Electric Co.,LTD. | **ILASPA®**



▲ LS-6

▲ LS-6A



▲ LS-6B
(Pressure regulation)

▲ LS-6B Plus



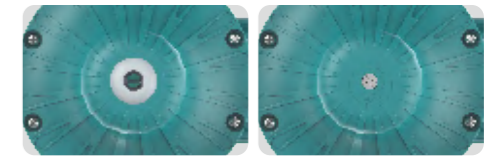
LS-6/6A/6B/6B PLUS					
电压	Voltage	220/110V	保护等级	Protection/Grade	IP65
频率	Frequency	50/60Hz	温度	Temperature	90°C
最大电流	Max Current	10A	包装尺寸	Packing Size	51×43×28.3cm
最大功率	Max Power	1.1kW	数量	PCS/CTN	12pcs
启动压力	Start Pressure	0.8/1.5/2.2bar	净重	N.W.	10.68kg
最大工作压力	Max Working/Pressure	10bar	毛重	G.W.	13.36kg
接口	Jointscrew	G1			

PRESSURE CONTROL

Smart: automatic control of the operation of the pump, when the water shortage automatically stop the pump.
 Safety: The outlet and inlet use the engineering grade environmental friendly materials, they are safe and durable.
 Plug and play: simple to operate, easy to use.
 Low noise: parts standardized, cost-effective, more stable.



LS-8



Option: without GAUGE can choose

LS-8					
电压	Voltage	110V/220V	接口	Jointscrew	G1
频率	Frequency	50/60Hz	保护等级	Protection/Grade	IP65
最大电流	Max Current	10A	温度	Temperature	90°C
最大功率	Max Power	1.1kW/1.5kW	包装尺寸	Packing Size	60.3×47.5×20.3cm
可调压力	Adjustment Pressure	1.0-3.5bar	数量	PCS/CTN	12pcs
不可调压力	Not Adjustment Pressure	0.8/1.2/1.5/2.2bar	净重	N.W.	13.03kg
最大工作压力	Max Working/Pressure	10bar	毛重	G.W.	15.58kg

LS-8A



LS-8A					
电压	Voltage	110V/220V	保护等级	Protection/Grade	IP65
频率	Frequency	50/60Hz	温度	Temperature	90°C
最大电流	Max Current	10A	包装尺寸	Packing Size	60×47×23cm
最大功率	Max Power	1.1kW	数量	PCS/CTN	12pcs
启动压力	Start Pressure	1.0-3.5bar	净重	N.W.	13.5kg
最大工作压力	Max Working/Pressure	10bar	毛重	G.W.	16.1kg
接口	Jointscrew	G1			

MC-1 FOR WATER PUMP



MC-1				
电压	Voltage	110-120V 220-240V		
额定电流	Rated Current	1.5HP/20A		
频率	Frequency	50/60Hz		
压力设定	Pressure Setting	20-40PSI/30-50PSI/40-60PSI		
包装尺寸	Packing Size	51×37×21		
数量	PCS/CTN	50		
净重	N.W.	16.7		
毛重	G.W.	17.6		
	公斤BAR	1.4-2.8	2.1-3.5	2.8-4.2
	PSI	20-40	30-50	40-60

1BAR=0.1MPA=14.5PSI
PSI 单位lb/in2 磅/升

MC-2 LOWER WATER LEVEL PROTECT FUNCTION



MC-2				
电压	Voltage	110-120V 220-240V		
额定电流	Rated Current	1.5HP/20A		
频率	Frequency	50/60Hz		
最低压力	Highest Pressure	20PSI		
最高压力	Lowest Pressure	80PSI		
压力设定	Pressure Setting	20-40PSI/30-50PSI/40-60PSI		
包装尺寸	Packing Size	51×47.5×21		
数量	PCS/CTN	50		
净重	N.W.	16.7		
毛重	G.W.	17.6		

PSI 单位lb/in2 磅/升

MC-3/3A/3B/3C

www.laspa.com
Wenling Ouyi Electric Co.,LTD.

ILASPA®



▲ MC-3



▲ MC-3A



▲ MC-3B



▲ MC-3C



MC-3/3A/3B/3C					
电压	Voltage	110-120V 220-240V			
额定电流	Rated Current	1.5HP/20A			
频率	Frequency	50/60Hz			
最高压力	Highest Pressure	20PSI			
包装尺寸	Packing Size	53×27×17.5			
数量	PCS/CTN	100			
净重	N.W.	19.5			
毛重	G.W.	21			
	公斤BAR	1.0-1.8	1.5-2.2	1.8-2.6	2.2-3.0
	PSI	14.5-26	20-30	26-38	32-44

1BAR=0.1MPA=14.5PSI
PSI 单位lb/in2 磅/升

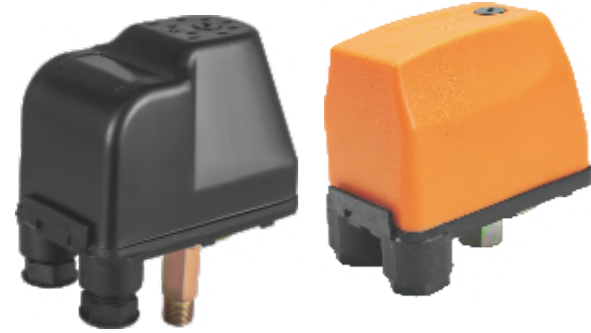
MC-8 FOR WATER PUMP



MC-8				
压力范围	Pressure Range	15-80PSI		
额定电流	Rated Current	12A		
额定电压	Rated Voltage	110-120V 220-240V 380V		
频率	Frequency	50/60Hz		
最高环境温度	Max Ambient Temperature	40°C		
最高介质温度	Max Liquid Temperature	60°C		
包装尺寸	Carton Size	62.5×33.5×39.5cm		
数量	PCS/CTN	30		
净重	N.W.	18.65kg		
毛重	G.W.	19.65kg		
	公斤BAR	1.4-2.8	2.1-3.5	2.8-4.2
	PSI	20-40	30-50	40-60

1BAR=0.1MPA=14.5PSI
PSI 单位lb/in2 磅/升

MC-9/PSG-1



▲ MC-9

▲ PSG-1

外螺纹长度: 26 36 43毫米
Male Screw Size: 26mm 36mm 43mm



MC-9		
额定电压	Voltage	110-120V 220-240V 380V
额定电流	Rated Current	16A(10A) 20A
压力设定	Pressure Setting	20-60PSI
螺纹接口	Joint Screw	1/4"
包装尺寸	Packing Size	FEMALE: 54.5×35×22.5 43MM MALE 55×36×27
数量	PCS/CTN	50
净重	N.W.	18.7
毛重	G.W.	21.1
	公斤BAR	1.4-2.8 2.1-3.5 2.8-4.2
	PSI	20-40 30-50 40-60

1BAR=0.1MPa=14.5PSI

PSI 单位lb/in2 磅/升

MC-9A FOR DIRTY WATER PUMP



MC-9A		
额定电压	Voltage	110-120V 220-240V
额定电流	Rated Current	16A(10A) 20A
压力设定	Pressure Setting	15-80PSI
压力范围	Pressure Range	15-35PSI, 20-40PSI, 30-50PSI, 40-60PSI, 50-80PSI, 95-125PSI, 120-150PSI, 135-175PSI
螺纹接口	Joint Screw	1/4"
包装尺寸	Packing Size	FEMALE: 54.5×35×22.5 43MM MALE 55×36×27
数量	PCS/CTN	50
净重	N.W.	18.7
毛重	G.W.	21.1
	公斤BAR	0.5-1.5

1BAR=0.1MPa=14.5PSI

PSI 单位lb/in2 磅/升

MC-5 FOR WATER PUMP

www.laspa.com
Wenling Ouyi Electric Co.,LTD.

ILASPA®



MC-5				
电压	Voltage	110-120V	220-240V	220-240V
额定电流	Rated Current	1.5HP/20A	2.0HP/12A	3.0HP/17A
频率	Frequency	50/60Hz		
最低压力	Highest Pressure	20PSI		
最高压力	Lowest Pressure	80PSI		
压力设定	Pressure Setting	20-40PSI/30-50PSI/40-60PSI		
包装尺寸	Packing Size	51×37×21		
数量	PCS/CTN	50		
净重	N.W.	16.7		
毛重	G.W.	18.3		
	公斤BAR	1.4-2.8	2.1-3.5	2.8-4.2 4.8-7
	PSI	20-40	30-50	40-60 70-100

1BAR=0.1MPa=14.5PSI

PSI 单位lb/in2 磅/升

MC-5A FOR AIR COMPRESSOR



MC-5A		
电压	Voltage	110-120V 220-240V
额定电流	Rated Current	1.5HP/20A
频率	Frequency	50/60Hz
最低压力	Highest Pressure	20PSI
最高压力	Lowest Pressure	80PSI
压力设定	Pressure Setting	20-40PSI/30-50PSI/40-60PSI
包装尺寸	Packing Size	51×43×20cm
数量	PCS/CTN	50pcs
净重	N.W.	18kg
毛重	G.W.	20kg
	公斤BAR	5-8
	PSI	70-116

1BAR=0.1MPa=14.5PSI

PSI 单位lb/in2 磅/升

MC-6 FOR AIR COMPRESSOR



MC-6		
输入电压	Input Voltage	1.1KW/2.2KW
频率	Frequency	1HP/1.5HP
电流	Current	50/60Hz
功率	Power(K.W)	16(10)A
功率	Power(HP)	110-120V 220-240V
接通-断开压力	On-off pressure	95-125PSI/120-150PSI/135-175PSI 5.5-8BAR/7-10BAR/10-12.5BAR
最大承受压力	Max Pressure	12.5bar
温度参数	Temperature Parameters	0-55°C

MC-7 FOR AIR COMPRESSOR



220-240V FOR AIR COMPRESSOR

380V FOR AIR COMPRESSOR

公斤BAR	5-8
PSI	70-116

1BAR=0.1MPA=14.5PSI
PSI 单位lb/in2 磅/升

MC-7

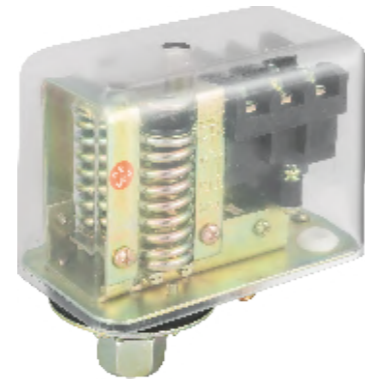
额定电压	Rated Voltage	110-120V 220-240V 380V	净重	N.W.	16
包装尺寸	Packing Size	58x46x17	毛重	G.W.	18
数量	PCS/CTN	50			

Model	Type	input Voltage (V)	Max Current (A)	Joint Screw	On-OFF Pressure
MC-7	One way	3phase 380V	10A	Female 1/4"	5.5-8bar
MC-7	Four way	3phase 380V	10A	Female 1/4"	5.5-8bar
MC-7	One way	1phase 220V	10A	Female 1/4"	5.5-8bar
MC-7	Four way	1phase 220V	10A	Female 1/4"	5.5-8bar

MC-11 FOR AIR COMPRESSOR AND WATER PUMP

Pressure Switch (4-12Bar)

MC-11 pressure switches are used to regulate the tank pressure between two preset values on a 3 phase electrically driven air compressors. They are available with an unloader valve, which prevents compressors from starting under load. On-Off knob for manual cutting off the compressor.



MC-11

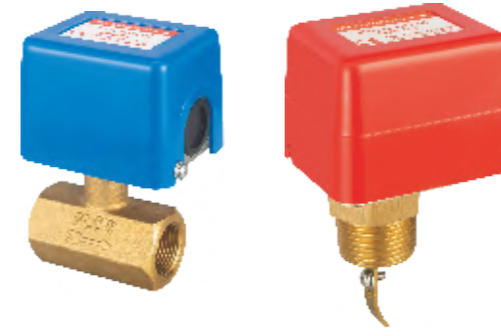
介质	Media	Air	电气额定值	Electrical Rating	380V, 20A, 50Hz
工作压力范围	Operating Pressure Range	4bar~12.5bar	触点排列	Contact Arrangement	Normal Close(NC)
压差	Differential Pressure	2bar~3bar	港口	Port	One port or Four ports available
出厂设置	Factory Setting	5bar~8bar/5.5bar~8bar/9bar~12bar	管件	Pipe Fittings	G1/4, G3/8 or 1/4, 3/8 NPT Female
工作温度范围	Operating Temperature Range	-30~55°C			

Other Pressure Settings and Differential Pressure are available on request.
Conversion: 1Mpa =10bar, 1bar = 14.5PSI, 1Kg/cm² = 14.2PSI

MC-12/13

www.laspa.com
Wenling Ouyi Electric Co.,LTD.

ILASPA®



▲ MC-12

▲ MC-13

MC-12/13

额定电压 (V) Rated Voltage(V)	功率 Horsepower	125 VAC	250 VAC
额定电流 (A) Rated Amps(A)			
无感电流 Non-inductive Amps	1	15	15
感应电流 Inductive Amps	恒定电流 Rated Amps	0.75	3.5
	瞬时电流 Locked Rotor Amps	0.45	21

MC-14



MC-14

电气参数	Electrical Parameter	120VAC	208VAC	240VAC	277VAC
功率	Horsepower	1	1	1	-
满载电流	Full Load Amps	16.0	8.8	8.0	-
瞬时电流	Locked Rotor Amps	96.0	52.8	48.0	-
无感电流	Non-inductive Amps	16.0	16.0	16.0	16.0
一般用途的电流额定值	Pilot Duty	125VA at 24/277 VAC			

产品	内盒 (长x宽x高) cm	外箱 (长x宽x高) cm	只/箱	净重/箱 (KG)	毛重/箱 (KG)	体积 (CBM)
MC-13	9x7x15.7	48.5x38x32.5	50	20.0	22.5	0.059
MC-14	11.1x7.8x23.7	43x35.5x49.5	30	21.0	23.8	0.075
三通水流开关 DN25 MC-12(25A/25B)	9x7x15.7	38.0x19.0x33.0	20	16.0	17.0	0.023
三通水流开关 DN20 MC-12(20A/20B)				15.0	16.0	
三通水流开关DN15 MC-12(15A/15B)				14.0	15.0	
压力开关MLSP系列	8.4x5.2x10.8	43.8x29.5x24.5	50	20.5	21.8	0.031
双压控制器MLSP830系列	10.5x5.8x11.6	33x30.5x25.2	30	17.4	18.2	0.025

MC-15



MC-15

功率 Power	电压 Voltage	额定电流 Rated Current	热继电器元件调节范围 Thermal Relay Components Adjustment range
0.75kW	380V	2.1A	1.7-2.5A
1.1kW	380V	2.5A	2-3A
1.5kW	380V	3.6A	2.8-4.4A
2.2kW	380V	5A	5.5-8A
3kW	380V	6.6A	7-11A
4kW	380V	9A	9-13A
5.5kW	380V	11A	12-18A
7.5kW	380V	15A	12-18A
7.5kW	380V	15A	12-18A
11kW	380V	22A	20-32A
15kW	380V	30A	28-45A
18.5kW	380V	37A	40-63A
22kW	380V	44A	40-63A
30kW	380V	60A	53-85A

Magnetic starter is mainly applied to circuit of AC 50 or 60Hz, voltage up to 550v for far distance making and breaking circuit and frequency starting and controlling motor.It has the features of small volume, light weight,low power consumption, high efficiency,safe and reliable performance etc.

MLSP SINGLE PRESSURE CONTROL SPECIFICATION

Technical Parameters:

The adjusting range is: -0.2-7.5(bar) The maximum test pressure: 22(bar)
 Mechanical back to the poor: 0.7-4(bar) Pressure connection: G1/4A
 Maximum working pressure: 17(bar) Contact material: Ag



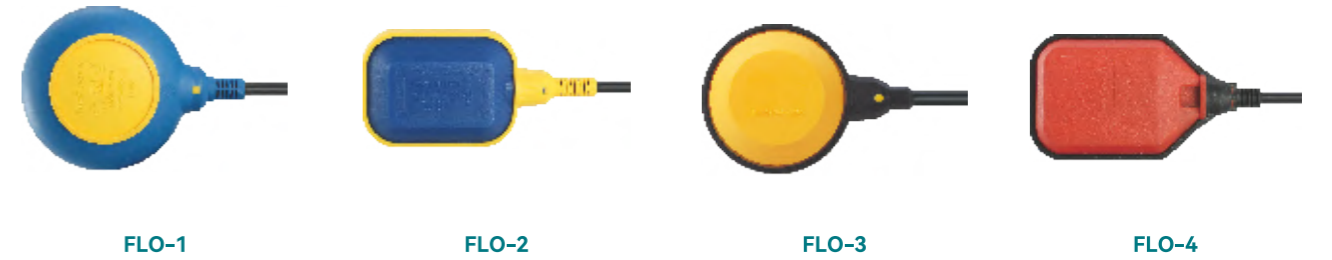
型号 Model	压力范围 Pressure Range(bar)	压差 Differential Pressure(bar)	出厂设定 Factory Setting(bar)		最大气密试验压力 Max.gas Tight Test Pressure(bar)
			fig.1	fig.2	
MLSP502	-0.5~2	0.2~0.7	1	0.5	16.5
MLSP503	-0.5~3	0.35~1.5	2	1	16.5
MLSP506	-0.5~6	0.6~4	3	2	16.5
MLSP506M	-0.5~5.5	≤1	手动复位 manual reset	3	16.5
MLSP110	1~10	1~3	6	5	16.5
MLSP516	5~16	2~5	10	8	33
MLSP520	5~20	2~5	16	14	33
MLSP530D	5~30	3~10	20	15	33
MLSP530	8~30	3~5固定fixation	20	15~17	33
MLSP503M	8~30	≤5	20	手动复位 manual reset	33

MLSP DUAL PRESSURE CONTROLLER SPECIFICATION



型号 Model	低压 Low Pressure		高压 High Pressure		低压 Low Pressure	高压 High Pressure	出厂设定 Factory Setting(bar)			
	压力范围 Pressure Range(bar)	压差 Differential Pressure(bar)	压力范围 Pressure Range(bar)	压差 Differential Pressure(bar)	复位形式 Format Form	出厂设定 Factory Setting(bar)				
						fig.2	fig.1	fig.2	fig.1	
MLSP830	-0.5~6	0.6~4	8~30	3~5固定fixation	自动auto	自动auto	3	2	20	15
MLSP830HM	-0.5~6	0.6~4	8~30	≤5	自动auto	手动manual	3	2	20	手动manual
MLSP830HLM	-0.5~5.5	≤1	8~30	≤5	手动manual	手动manual	手动manual	3	20	手动manual

FLO

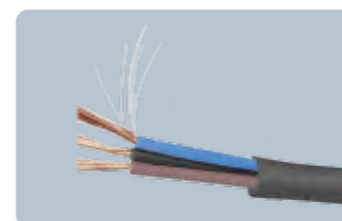


FLO SERIES
Float Switch

FLO		
额定电压	Voltage	AC 125V/250V
额定电流	Rated Current	AC 16(4A)
频率	Frequency	50/60Hz
温度	Temperature	90°C
保护等级	Protection/Grade	IP68

Diameter Copper wire pcs

3X1	20UM	0.2MM	32PCS
3X0.75	20UM	0.2MM	24PCS
3X0.5	20UM	0.2MM	16PCS
3X1	15UM	1.5MM	56PCS
3X0.75	15UM	1.5MM	42PCS
3X0.5	15UM	1.5MM	28PCS



OIL PRESSURE GAUGE



Model	YN40	YN40Z	YN50	YN50Z	Yn63	YN63Z	YN100	YN100Z
Pressure range	-1-100BAR	-1-600BAR	-1-600BAR	-1-600BAR	-1-600BAR	-1- 600BAR	-1-600BAR	-1-600BAR
Cover material	SS304	SS304	SS304	SS304	SS304	SS304	SS304	SS304
Connector material	copper	copper	copper	copper	copper	copper	copper	copper
Connector type	axial	The radial	axial	The radial	axial	The radial	axial	The radial
Connector size(G)	1/8	1/8	1/4	1/4	1/4	1/4	1/2	1/2
PCS/CTN	200	200	100	100	100	100	50	50
Size (cm)	38*25*25	37*31*16	34*28*36	40*37*15	38*31*38	44*37*17	58*23*27	58*23*27

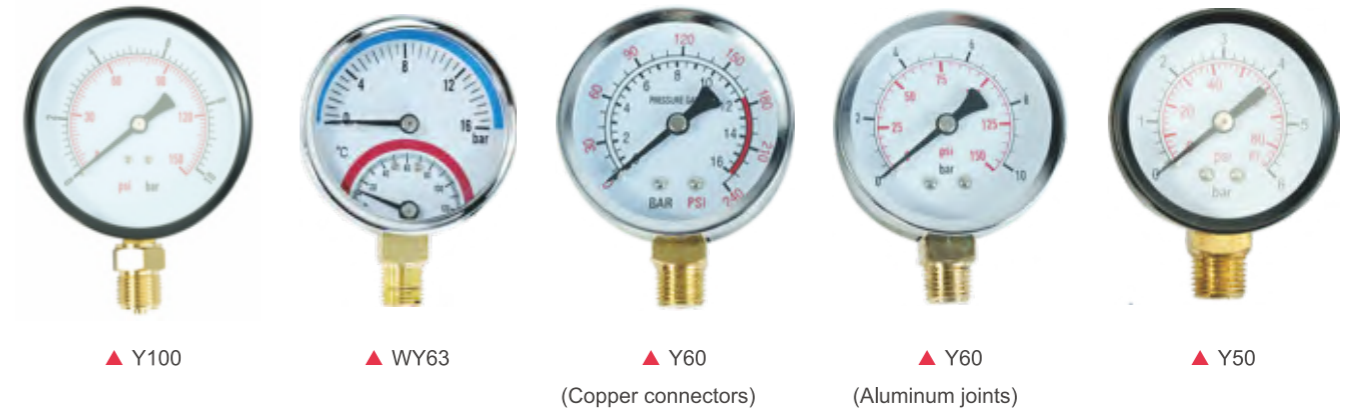
Note: It can be customized if there are special pressure requirements.

PRESSURE GAUGE (AXIAL)



PRESSURE GAUGE (AXIAL)

www.laspa.com
Wenling Ouyi Electric Co.,LTD.

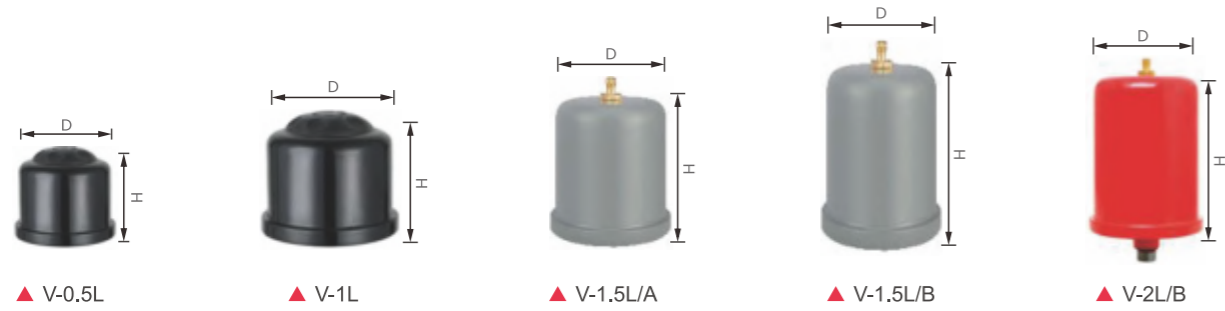


PRESSURE GAUGE (THE RADIAL)



Model	Y35Z	Y40	Y40Z	Y50	Y50Z	Y60	Y60Z	Y63	Y63Z
Pressure range	0-1 6bar	0-1450PSI	0-1450PSI	0-1450PSI	0-1450PSI	0-1450PSI	0-1450PSI	0-1450PSI	0-1450PSI
Cover material	ironclad	ironclad	ironclad	ironclad	ironclad	ironclad	ironclad	ironclad	ironclad
Connector material	copper	copper	copper	copper	copper	copper	copper	copper	copper
Connector type	The radial	axial	The radial	axial	The radial	axial	The radial	axial	The radial
Connector size(G)	m10*1	1/4、1/8	1/4、1/8	1/4	1/4	1/4	1/4	1/4	1/4
PCS/CTN	200	200	200	200	200	200	200	100	100
Size (cm)	37*31*16	38*24*25	37*31*16	46*28*24	42*28*23	32*34*34	32*27*26	36*18*35	36*18*35

PRESSURE TANK



▲ V-0.5L ▲ V-1L ▲ V-1.5L/A ▲ V-1.5L/B ▲ V-2L/B

V		V-0.5L	V-1L	V-1.5L/A	V-1.5L/B	V-2L/B
型号	Model	V-0.5L	V-1L	V-1.5L/A	V-1.5L/B	V-2L/B
直径(mm)	Diameter	72	114.6	101	96	115
高度(mm)	Height	148	97.65	150	141	182
最大工作压力	Max.Press	4	4	4	4	4
最高工作温度	Max.Temp	99°C	99°C	99°C	99°C	99°C
接口	Connect	G3/8	G3/8	G3/8	G3/8	G3/8
装箱数	PCS/CTN	40	40	30	20	20
包装尺寸	Size (cm)	61*39*17	55*39.5*22.5	47.5*47*20	45*36.5*20	62*41.5*26



▲ V-5L/8L ▲ V-12L ▲ V-19L/24L ▲ H-24L ▲ V-36L/50L/60L ▲ V-80L/100L

V/H		V-5L	V-8L	V-12L	V-19L	V-24L	H-24L	V-36L	V-50L	V-60L	V-80L	V-100L
型号	Model	V-5L	V-8L	V-12L	V-19L	V-24L	H-24L	V-36L	V-50L	V-60L	V-80L	V-100L
直径(mm)	Diameter	200	200	280	280	280	330	360	360	450	450	450
高度(mm)	Height	225	320	370	430	450	325	550	660	660	720	790
最大工作压力	Max.Press	8、10	8、10	8、10	8、10	8、10	8、10	8、10	8、10	8、10	8、10	8、10
最高工作温度	Max.Temp	99°C	99°C	99°C	99°C	99°C	99°C	99°C	99°C	99°C	99°C	99°C
接口	Connect	G3/4 or G1	G3/4 or G1	G3/4 or G1	G3/4 or G1	G3/4 or G1	G3/4 or G1	G3/4 or G1	G3/4 or G1	G3/4 or G1	G3/4 or G1	G3/4 or G1
装箱数	PCS/CTN	8	6	1	1	1	1	1	1	1	1	1
	CBM	0.00875	0.014	0.0233	0.03214	0.03606	0.03606	0.07227	0.08697	0.13163	0.1539	0.1701

PRESSURE TANK



▲ H-19L/24L ▲ H-36L/50L ▲ H-60L ▲ H-80L ▲ H-100L

H		H-19L	H-24L	H-36L	H-50L	H-60L	H-80L	H-100L
型号	Model	H-19L	H-24L	H-36L	H-50L	H-60L	H-80L	H-100L
直径(mm)	Diameter	270	270	360	360	390	450	450
长度(mm)	Length	400	450	420	550	570	600	720
最大工作压力	Max.Press	8、10	8、10	8、10	8、10	8、10	8、10	8、10
最高工作温度	Max.Temp	99°C	99°C	99°C	99°C	99°C	99°C	99°C
接口	Connect	G3/4 or G1	G3/4 or G1	G3/4 or G1	G3/4 or G1	G3/4 or G1	G3/4 or G1	G3/4 or G1
装箱数	PCS/CTN	1	1	1	1	1	1	1
包装尺寸	Size (cm)	41*27*29	45*27*29	46*36*38	55*36*38	60*36*38	59.5*45*49.5	68.5*45*49.5



▲ V-5L/8L/12L ▲ V-19L/24L ▲ V-36L/50L ▲ V-60L/80L/100L ▲ H-12L/19L/24L ▲ H-36L/50L/60L ▲ H-80L/100L

V		V-5L	V-8L	V-12L	V-19L	V-24L	V-36L	V-50L	V-60L	V-80L	V-100L
型号	Model	V-5L	V-8L	V-12L	V-19L	V-24L	V-36L	V-50L	V-60L	V-80L	V-100L
直径(mm)	Diameter	180	200	200	270	270	360	360	390	450	450
高度(mm)	Height	290	320	350	400	450	580	710	730	760	880
最大工作压力	Max.Press	6	6	6	6	6	6	6	6	6	6
最高工作温度	Max.Temp	99°C	99°C	99°C	99°C	99°C	99°C	99°C	99°C	99°C	99°C
接口	Connect	G3/4 or G1	G3/4 or G1	G3/4 or G1	G3/4 or G1	G3/4 or G1	G3/4 or G1	G1	G1	G1	G1
装箱数	PCS/CTN	1	1	1	1	1	1	1	1	1	1

H		H-12L	H-19L	H-24L	H-36L	H-50L	H-60L	H-80L	H-100L
型号	Model	H-12L	H-19L	H-24L	H-36L	H-50L	H-60L	H-80L	H-100L
直径(mm)	Diameter	270	270	270	360	360	390	450	450
长度(mm)	Length	350	400	450	420	550	570	600	720
最大工作压力	Max.Press	6	6	6	6	6	6	6	6
最高工作温度	Max.Temp	99°C	99°C	99°C	99°C	99°C	99°C	99°C	99°C
接口	Connect	G3/4 or G1	G3/4 or G1	G3/4 or G1	G3/4 or G1	G1	G1	G1	G1
装箱数	PCS/CTN	1	1	1	1	1	1	1	1

CIRCUIT BOARD



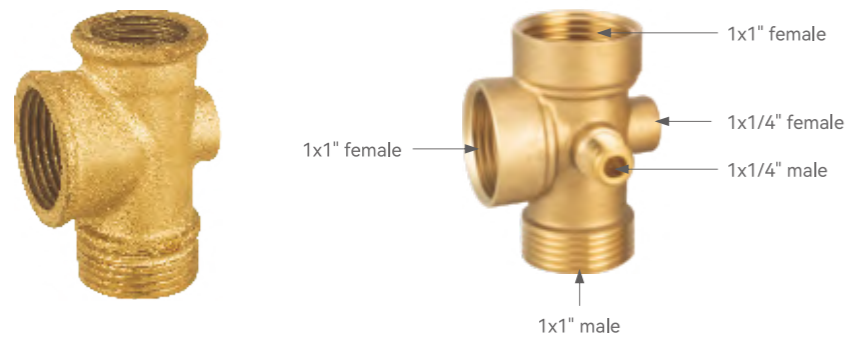
Product picture	Model	Describe	Specifications	Weight	Packing number	Size
	DS-52007	Nickel plated Copper connector, A bent pipe with 1 "nut, A 1 "outer tooth	50cm	330	50	58x32x20
			60cm	370	50	68x32x20
			100cm	530	40	105x32x18



LS-16 Digital Detail Drawing



LS-16 Machine Detail Drawing



规格	Height	7cm
常规重量	Weight	135、150
装箱数	PCS/CTN	100
尺寸	CBM	54x28x18

HEIGHT: 7CM
WEIGHT: 155G
PCS/CTN: 100
PACKING SIZE: 54x28x18

HEIGHT: 8CM
WEIGHT: 165G
PCS/CTN: 100
PACKING SIZE: 54x28x18

HEIGHT: 9CM
WEIGHT: 170G
PCS/CTN: 100
PACKING SIZE: 54x28x20

HEIGHT: 11CM
WEIGHT: 220G
PCS/CTN: 100
PACKING SIZE: 54x28x24

POWER CABLE AND PLUG



LS-1



A 接1米欧插 (电源) 和25-40或者60cm短线无插头 (电机)
Connect 1 meter europe plug(power),25-40 or 60cm cable without plug(motor)



E 接英国插头 (电源), 不接电机
indepent connect british plug for power,no need cable for motor



B 接英国插头 (电源) 和60cm短线无插头 (电机)
connect 1meter british plug for power, 25-40 or 60cm cable for motor



F 接2根短线无插头 (电源和电机)
two short cable without plug(25-40 or 60cm),one for power,one for motor



C 单独接1米欧插 (电源), 不接电机
indepent connect one meter Europe cable (power), no need for cable for motor



G 接1米欧插 (电源) 和60cm德国插座 (电机)
connect 1 meter Europe plug(power), 60cm connect germany socket for motor



D 单独接灰色测试线 (电源), 不接电机
indepent connect the gray test cable with plug(power), no need cable for motor

LS-3



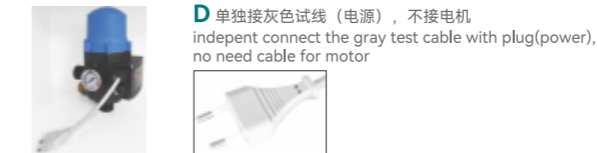
A 接1米欧插 (电源) 和25-40或者60cm短线无插头 (电机)
connect 1 meter europe plug(power),25-40 or 60cm cable without plug(motor)



B 接英国插头 (电源) 和60cm短线无插头 (电机)
connect british plug for power,25-40 or 60cm cable for motor



C 单独接1米欧插 (电源), 不接电机
connect one meter Europe plug(power), no need for cable for motor



D 单独接灰色试线 (电源), 不接电机
indepent connect the gray test cable with plug(power), no need cable for motor



E 接英国插头 (电源)
indepent connect british plug for power, no need cable for motor



F 接英国插头 (电源), 不接电机
two short cable without plug(25-40 or 60cm), one for power,one for motor



G 接1米欧插 (电源) 和60cm德国插座 (电机)
connect one meter Europe plug(power), 60cm connect germany socket for motor

LS-4



A 单独接灰色测试线 (电源), 不接电机
indepent connect the gray test cable with plug(power), no need cable for motor



B 单独接1米欧插 (电源), 不接电机
connect one meter Europe plug(power), no need for cable for motor

LS-6



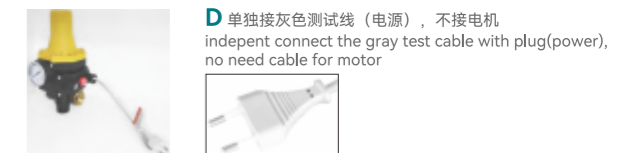
A 接1米欧插 (电源) 和25-40或者60cm短线无插头 (电机)
connect 1 meter europe plug(power),25-40 or 60cm cable without plug(motor)



C 单独接1米欧插 (电源), 不接电机
connect one meter Europe plug(power), no need for cable for motor



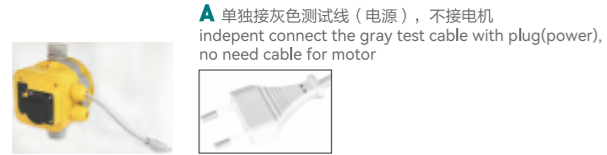
B 接英国插头 (电源) 和60cm短线无插头 (电机)
connect british plug for power,25-40 or 60cm cable for motor



D 单独接灰色测试线 (电源), 不接电机
indepent connect the gray test cable with plug(power), no need cable for motor

POWER CABLE AND PLUG

LS-8A



A 单独接灰色测试线（电源），不接电机
indepent connect the gray test cable with plug(power), no need cable for motor



B 单独接1米欧插（电源），不接电机
connect one meter Europe plug(power), no need for cable for motor

LS-8



A 接1米欧插（电源）和25-40或者60cm短线无插头（电机）
connect 1 meter europe plug(power),25-40 or 60cm cable without plug(motor)



E 接英国插头（电源），不接电机
indepent connect british plug for power,no need cable for motor



B 接英国插头（电源）和60cm短线无插头（电机）
connect british plug for power,25-40 or 60cm cable for motor



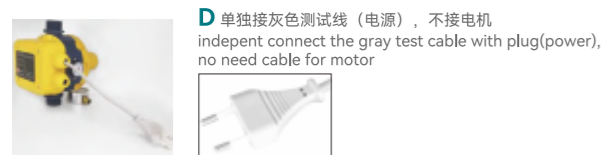
F 接2根短线无插头（电源和电机）
two short cable without plug(25-40 or 60cm), one for power,one for motor



C 单独接1米欧插（电源），不接电机
connect one meter Europe plug(power), no need for cable for motor



G 接1米欧插（电源）和60cm德国插座（电机）
connect one meter Europe plug(power), 60cm connect germany socket for motor



D 单独接灰色测试线（电源），不接电机
indepent connect the gray test cable with plug(power), no need cable for motor

接线剥皮长度:

LS-1: 直插、弯插、英插: 外皮剥线: 2.5cm
两根短线: 一头3cm, 一头2.5cm
铜线外皮: 0.7cm
LS-2: 直插、弯插、英插: 外皮剥线: 5cm
两根短线: 一头5cm, 一头3cm
铜线外皮: 1cm

LS-3/LS-3B/LS-4/LS-5/LS-6/LS-6A/LS-6B:
直插、弯插、英插: 外皮剥线: 3cm
两根短线: 外皮剥线: 3cm
铜线外皮: 1cm
LS-8: 直线、弯插、英插: 外皮剥线: 3cm
两根短线: 外皮剥线: 3cm
铜线外皮: 0.7cm

MC-1: 直插、弯插、英插: 外皮剥线: 6cm
两根短线: 一头6cm, 一头3cm
铜线外皮: 1cm
MC-9: 直插、弯插、英插: 外皮剥线: 8cm
两根短线: 一头8cm, 一头3cm
铜线外皮: 1cm

kW	0.37	0.55	0.75	1.1	1.5	2.2	3	4	5.5	7.5	11	15	18.5	22	30	37	45	55
HP	0.5	0.75	1	1.5	2	3	4	5	7	10	15	20	25	30	40	50	60	70

LS-15

DIGITAL SENSOR With pressure dry protection

Smart: automatic control of the operation of the pump, when the water shortage automatically stop the pump.
Safety: The outlet and inlet use the engineering grade environmental friendly materials, they are safe and durable.
Plug and play: simple to operate, easy to use.
Low noise: parts standardized, cost-effective, more stable.

