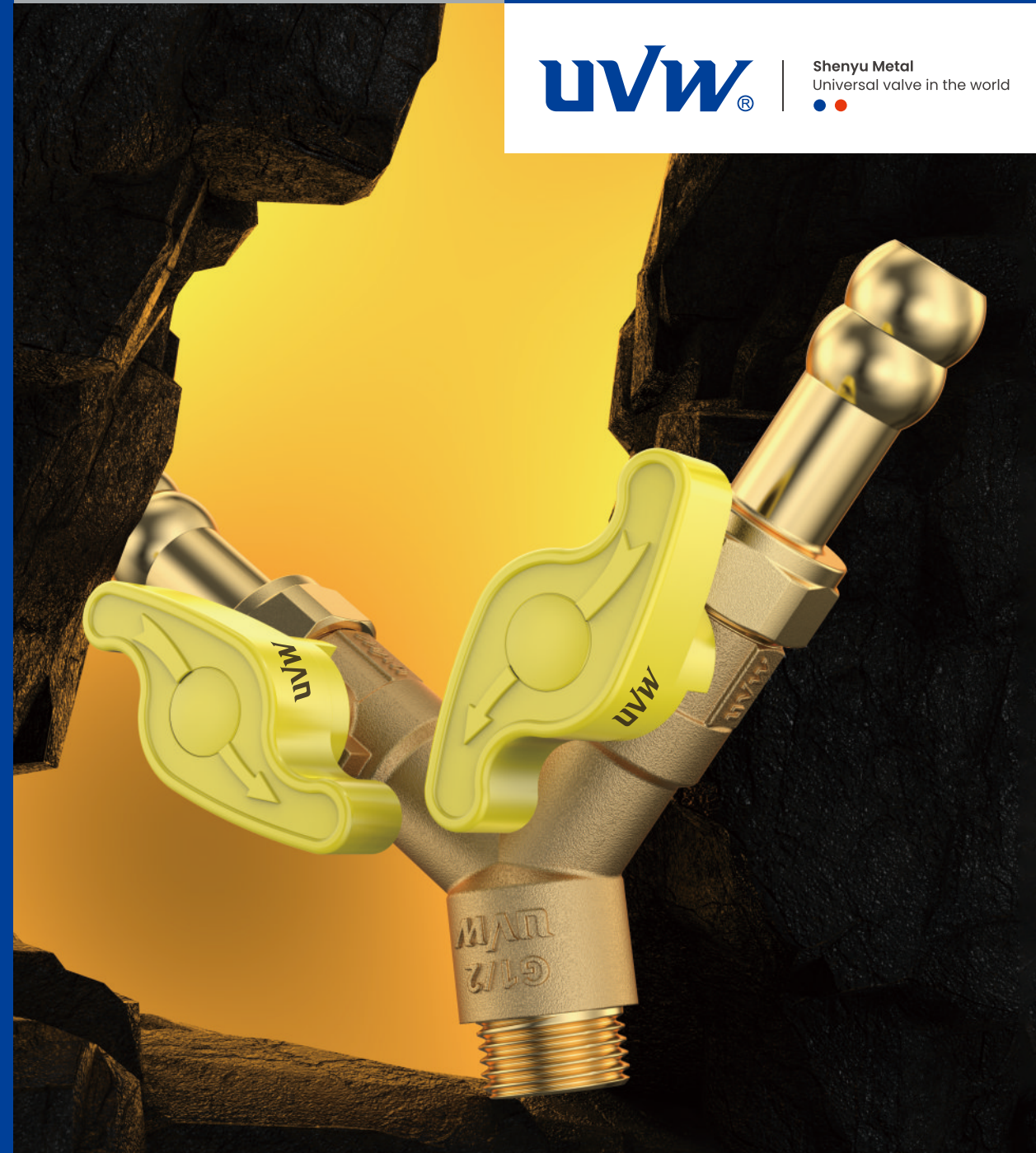


Universal Valve in the World

- Ball valve series
- Angle valve Series
- Brass bibcock Series
- Gas valve series
- Fitting series
- Other



Shenyu Metal
Universal valve in the world



Yuhuan Shenyu Metal Products Co.,Ltd

Add: Longxi zhengding Industrial Zone, Yuhuan City,Zhejiang Province, China



China Tel: 0086-576-87572808 Fax: 0086-576-87418490

Mobile: 0086-135 8619 4998

• www.uvvalve.com • E-mail: info@shenyuchina.com



The company reserves the right to change the technology, if there is any modification without notice, please refer to the product nameplate.



Shenyu Metal
Universal valve in the world



Yuhuan Shenyu Metal Products Co.,Ltd

Enterprise introduction

Ball valve series
Angle valve Series

Brass bibcock Series
Gas valve series

Fitting series
Other

www.uvwvalve.com



As one of the professional valve enterprises, it focus on product design, development, production and sales. our factory specializes in manufacturing all kinds brass valves, such as ball valves, check valves, bibcocks, and various fittings and so on.

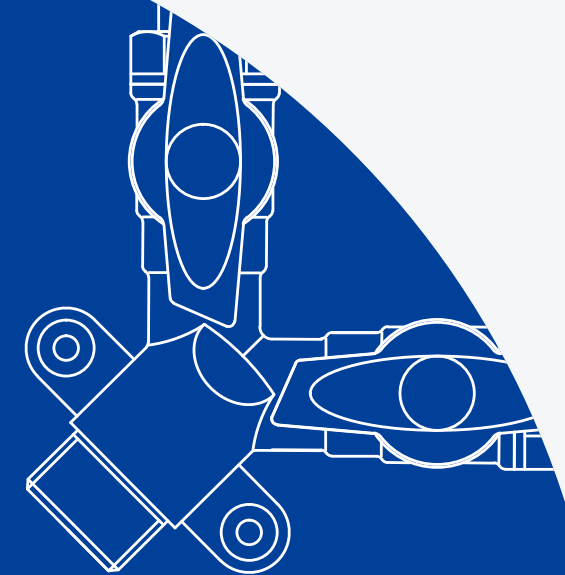
Around the world

With more than ten years of continuously developing and improving, we have gained the trust of our clients from South America, North America, Asia, and some other areas over the world.

Yuhuan Shenyu Metal Products Co.,ltd

Welcome to our company and discuss the chance of cooperation with us.

Yuhuan Shenyu Metal Products Co.,Ltd.
was founded in 2008, is located in
"China valve capital"-Yuhuan
Zhejiang



UVW®

Shenyu Metal
Universal valve in the world





R&D AND PRODUCTION

Shenyu has always paid great attention to product research and development, and invests a lot of research and development expenses every year.

With a product research and development center, it has been actively exploring the application of new technologies and materials.

In order to maintain the technical advantages and quality safety and stability of products, decades of continuous R&D investment integrate functionality with the latest technology, Shenyu has a large number of leading patented technologies, which are also the driving force for the company's rapid and sustainable development.

Strict inspection is the guarantee of product quality. Our aim is to prevent any imperfection and avoid any quality issues that could harm our brand. We have established a comprehensive and orderly set of inspection procedures.

Guided by the philosophy of "pursuing zero defects," Shenyu never allows any non-conforming products to leave the factory. We believe this is not only our responsibility to our customers but also to ourselves.

"Shape the future is to design it."



01 Ball valve series

The ball valve is evolved from the plug valve, its opening and closing part is a sphere, using the ball around the valve stem axis rotation 90 degrees to achieve the purpose of opening and closing.

The ball valve is mainly used to cut, distribute and change the direction of media flow on the pipe.



09 Check Valve Series

When the medium enters the valve from the bottom of the valve disc, the resistance that needs to be overcome by the operating force is the friction between the valve stem and the packing material and the thrust generated by the pressure of the medium, and the force of closing the valve is greater than the force of opening the valve, so the diameter of the valve stem should be larger, otherwise the failure of the top bend of the valve stem will occur.



10 Filter valves Series

The filter valve mesh adopts stainless steel double-layer mesh structure, which is sturdy and durable, and has the characteristics of advanced structure, small flow resistance and convenient sewage discharge

11 Gate valve series

The gate valve adopts a top-mounted structure, which reduces the connecting bolts of the valve body itself under the conditions of high pressure and large diameter, enhances the reliability of the valve and can overcome the influence of the self-weight of the system on the normal operation of the valve.



14 Stop valve series

This type of valve is very suitable for regulating the flow rate due to the relatively short opening or closing stroke of the stem, the very reliable shut-off function, and the change of the seat port in direct proportion to the stroke of the disc.



16 Brass radiator valve

It is mainly used for the automatic control of thermal energy balance of hot water heating system and equipment.



19 Angle valve Series

The difference from the ball valve is that the outlet of the angle valve is at a right angle of 90 degrees to the inlet

21 Brass bibcock Series

All copper faucet is a high-quality faucet product with characteristics such as corrosion resistance, wear resistance, antibacterial and sustainable use, making it an ideal choice for modern homes and commercial places.

25 Gas valve series

Brass gas ball valves are manufactured with excellent craftsmanship, providing unparalleled reliability and performance in gas control applications



29 Fitting series

35 Brass floating valve series



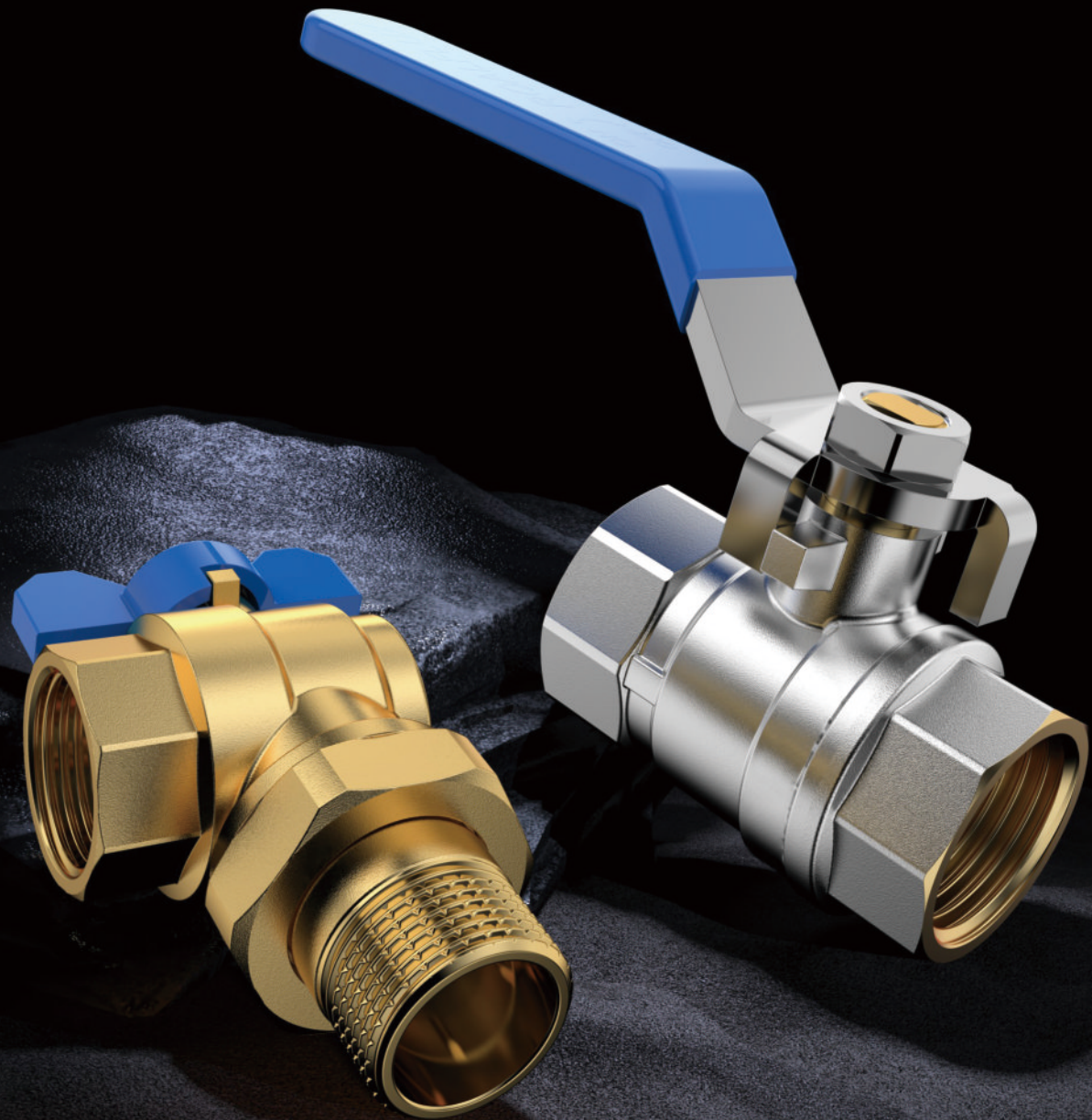
Universal Valve in the World

We adhere to the customer first service concept, always guided by customer needs, and provide comprehensive service support. Whether it's pre-sales consultation, in sales follow-up, or after-sales maintenance, we will be dedicated to serving you and allowing you to enjoy a worry-free shopping experience.



Ball valve Series

The ball valve is evolved from the plug valve, its opening and closing part is a sphere, using the ball around the valve stem axis rotation 90 degrees to achieve the purpose of opening and closing.
The ball valve is mainly used to cut, distribute and change the direction of media flow on the pipe.

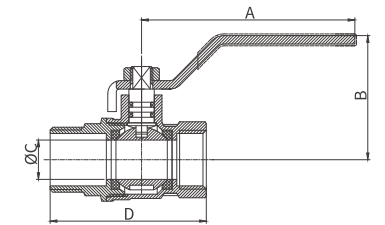


SY-2041

Brass ball valve

Nominal pressure: 105LB,2.5MPa
Working medium: water,gas,oil
Working temperature: $-20^{\circ}\text{C}\leq t\leq 120^{\circ}\text{C}$
Thread conform: (G,Rc,RP) BSP,BSPT,NPT,NPS,UN

Product model	DN	SIZE	A	B	C	D
SY-2041-04-00	DN15	1/2"	83	45	14	48
SY-2041-06-00	DN20	3/4"	96.7	50.2	18	66.1
SY-2041-08-00	DN25	1"	117	58.4	23	75

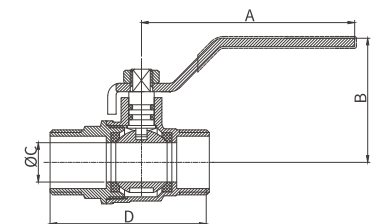


SY-2141

Brass ball valve

Nominal pressure: 105LB,2.5MPa
Working medium: water,gas,oil
Working temperature: $-20^{\circ}\text{C}\leq t\leq 120^{\circ}\text{C}$
Thread conform: (G,Rc,RP) BSP,BSPT,NPT,NPS,UN

Product model	DN	SIZE	A	B	C	D
SY-2141-04-00	DN15	1/2"	83	45	14	48
SY-2141-06-00	DN20	3/4"	96.7	50.2	18	69.1
SY-2141-08-00	DN25	1"	117	58.4	23	77

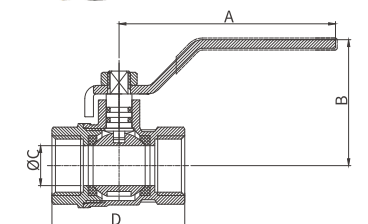


SY-2241

Brass ball valve

Nominal pressure: 105LB,2.5MPa
Working medium: water,gas,oil
Working temperature: $-20^{\circ}\text{C}\leq t\leq 120^{\circ}\text{C}$
Thread conform: (G,Rc,RP) BSP,BSPT,NPT,NPS,UN

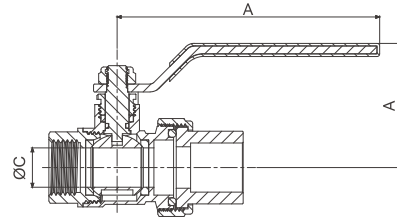
Product model	DN	SIZE	A	B	C	D
SY-2241-04-00	DN15	1/2"	83	43.5	14	46
SY-2241-06-00	DN20	3/4"	93	48.5	18	53
SY-2241-08-00	DN25	1"	116	58	23	63
SY-2241-10-00	DN32	1 1/4"	123	67	39	72
SY-2241-12-00	DN40	1 1/2"	136	77.5	37	83.5
SY-2241-16-00	DN50	2"	152	92	47	99



SY-2046

Brass ball valve

Nominal pressure: 105LB,1.6MPa
Working medium: water,gas,oil
Working temperature: $-20^{\circ}\text{C}\leq t\leq 120^{\circ}\text{C}$
Thread conform: (G,Rc,RP) BSP,BSPT,NPT,NPS,UN

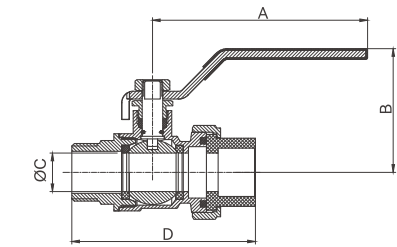


Product model	DN	SIZE	A	B	C	D
SY-2046-06-00	DN20	3/4"	83	48	15	73
SY-2046-08-00	DN25	1"	96	52.5	19	78.5
SY-2046-10-00	DN32	1 1/4"	116	61	25	90
SY-2046-12-00	DN40	1 1/2"	136	77	32	103.5
SY-2046-16-00	DN50	2"	136	82	38	116
SY-2046-20-00	DN63	2 1/2"	174	99.9	47	143.5

SY-2146

Brass ball valve

Nominal pressure: 105LB,1.6MPa
Working medium: water,gas,oil
Working temperature: $-20^{\circ}\text{C}\leq t\leq 120^{\circ}\text{C}$
Thread conform: (G,Rc,RP) BSP,BSPT,NPT,NPS,UN

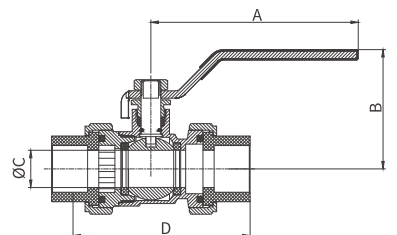


Product model	DN	SIZE	A	B	C	D
SY-2146-06-00	DN20	3/4"	83	48	15	83
SY-2146-08-00	DN25	1"	96	52.5	19	90
SY-2146-10-00	DN32	1 1/4"	116	61	25	98.5
SY-2146-12-00	DN40	1 1/2"	136	77	32	113
SY-2146-16-00	DN50	2"	136	82	38	140
SY-2146-20-00	DN63	2 1/2"	174	99.9	47	152.5

SY-2246

Brass ball valve

Nominal pressure: 105LB,2.5MPa
Working medium: water,gas,oil
Working temperature: $-20^{\circ}\text{C}\leq t\leq 120^{\circ}\text{C}$
Thread conform: (G,Rc,RP) BSP,BSPT,NPT,NPS,UN



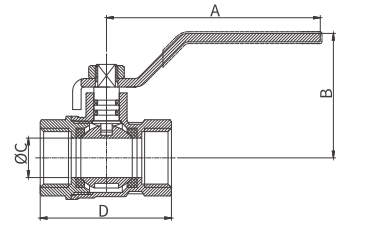
Product model	DN	SIZE	A	B	C	D
SY-2246-06-00	DN20	3/4"	83	48	15	93.5
SY-2246-08-00	DN25	1"	96	52.5	19	103
SY-2246-10-00	DN32	1 1/4"	116	61	25	109.5
SY-2246-12-00	DN40	1 1/2"	136	77	32	125
SY-2246-16-00	DN50	2"	136	82	38	140
SY-2246-20-00	DN63	2 1/2"	174	99.9	47	167.5
SY-2246-20-00	DN63	2 1/2"	216.8	107.9	50	181.9

SY-2238

Brass ball valve

Nominal pressure: 105LB,2.5MPa,4.0MPa
Working medium: water,gas,oil
Working temperature: $-20^{\circ}\text{C}\leq t\leq 120^{\circ}\text{C}$
Thread conform: (G,Rc,RP) BSP,BSPT,NPT,NPS,UN

Product model	DN	SIZE	A	B	C	D
SY-2238-02-00	DN8	1/4"	65	34.5	9	40.5
SY-2238-03-00	DN10	3/8"	65	34.5	9	40.5
SY-2238-04-00	DN15	1/2"	83	43	14	46
SY-2238-06-00	DN20	3/4"	83	46	18	53
SY-2238-08-00	DN25	1"	106	56	23	62
SY-2238-10-00	DN32	1 1/4"	136	72	30	72
SY-2238-12-00	DN40	1 1/2"	136	77	37	83
SY-2238-16-00	DN50	2"	152	92	47	99
SY-2238-20-00	DN65	2 1/2"	230	124	62	142
SY-2238-24-00	DN80	3"	273	136	75	160
SY-2238-32-00	DN100	4"	273	151	95	191

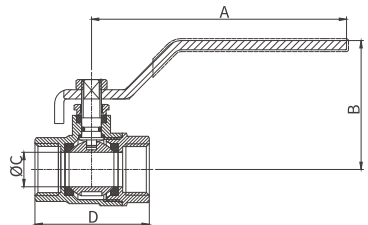


SY-2243

Brass ball valve

Nominal pressure: 105LB,2.5MPa,4.0MPa
Working medium: water,gas,oil
Working temperature: $-20^{\circ}\text{C}\leq t\leq 120^{\circ}\text{C}$
Thread conform: (G,Rc,RP) BSP,BSPT,NPT,NPS,UN

Product model	DN	SIZE	A	B	C	D
SY-2243-04-00	DN15	1/2"	83	47	14	46
SY-2243-06-00	DN20	3/4"	83	50	19	61
SY-2243-08-00	DN25	1"	106	60.7	25	70
SY-2243-10-00	DN32	1 1/4"	136	76	32	84
SY-2243-12-00	DN40	1 1/2"	136	82.5	40	96
SY-2243-16-00	DN50	2"	152	95.5	50	116

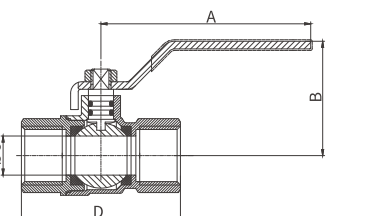


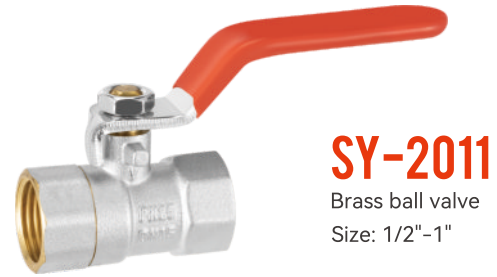
SY-2252

Brass ball valve

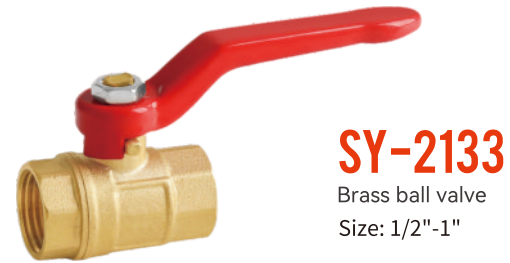
Nominal pressure: 105LB,2.5MPa
Working medium: water,gas,oil
Working temperature: $-20^{\circ}\text{C}\leq t\leq 120^{\circ}\text{C}$
Thread conform: (G,Rc,RP) BSP,BSPT,NPT,NPS,UN

Product model	DN	SIZE	A	B	C	D
SY-2252-04-00	DN15	1/2"	83	47	14	57
SY-2252-06-00	DN20	3/4"	83	50	18	64
SY-2252-08-00	DN25	1"	106	58.5	23	73
SY-2252-10-00	DN32	1 1/4"	136	70.5	30	81.5
SY-2252-12-00	DN40	1 1/2"	136	75.5	37	88.5
SY-2252-16-00	DN50	2"	152	87	45	98





SY-2011
Brass ball valve
Size: 1/2"-1"



SY-2133
Brass ball valve
Size: 1/2"-1"



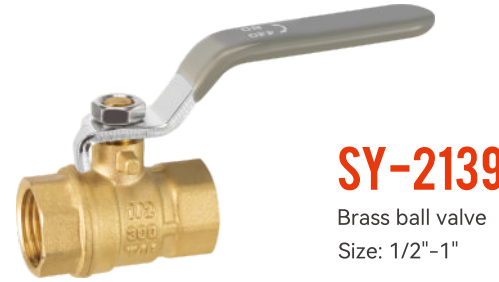
SY-2211
Brass ball valve
Size: 16x16
20x20
25x25



SY-2212
Brass ball valve
Size: 16x16
20x20
25x25



SY-2138
Brass ball valve
Size: 1/2"-1"



SY-2139
Brass ball valve
Size: 1/2"-1"



SY-2231
Brass ball valve
Size: 1/2"Fx16
3/4"Fx20
1"Fx25



SY-2232
Brass ball valve
Size: 1/2"Fx16
3/4"Fx20
1"Fx25



SY-2249
Brass ball valve
Size: 1/2"-2"



SY-2210
Brass ball valve
Size: 1/2"-1"



SY-2261
Brass ball valve
Size: 1/2"Mx16
3/4"Mx20
1"Mx25



SY-2262
Brass ball valve
Size: 1/2"Mx16
3/4"Mx20
1"Mx25



SY-2411
Brass ball valve
Size: 1/2"-1"



SY-2412
Brass ball valve
Size: 1/2"-1"



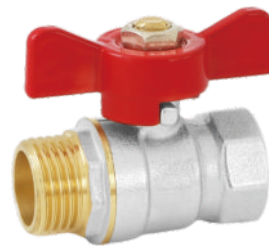
SY-2905
Gas ball valve
Size: 3/4"Mx3/4"F
1"Mx1"F



SY-2901
Gas ball valve
Size: 3/4"Mx3/4"F
1"Mx1"F



SY-2421
Brass ball valve
Size: 1/2"-1"



SY-2431
Brass ball valve
Size: 1/2"-1"



SY-2033
Gas ball valve
Size: 1/2"MxΦ10



SY-2034
Gas ball valve
Size: 1/2"MxΦ10



SY-2035
Gas ball valve
Size: 1/2"



SY-2036
Gas ball valve
Size: 1/2"



SY-2432
Brass ball valve
Size: 1/2"-1"



SY-2073
Brass ball valve
Size: 1/2"



SY-2037
Gas ball valve
Size: 1/2"Fx3/8"M



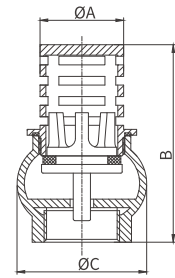
SY-2082
Gas ball valve
Size: 1/4"

SY-2601

Foot valve series

Nominal pressure: 105LB,1.6Mpa
Working medium: water,gas,oil
Working temperature: $-20^{\circ}\text{C}\leq t\leq 120^{\circ}\text{C}$
Thread conform: (G,Rc,RP) BSP,BSPT,NPT,NPS,UN

Product model	DN	SIZE	A	B	C
SY-2601-04-00	DN15	1/2"	22	58.5	33.5
SY-2601-06-00	DN20	3/4"	27	65.5	37.5
SY-2601-08-00	DN25	1"	29	72	45
SY-2601-10-00	DN32	1 1/4"	33	85	56
SY-2601-12-00	DN40	1 1/2"	39	89	60
SY-2601-16-00	DN50	2"	43	102	71

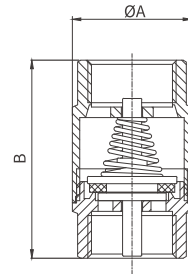


SY-2602

Check valve series

Nominal pressure: 105LB,1.6Mpa
Working medium: water,gas,oil
Working temperature: $-20^{\circ}\text{C}\leq t\leq 120^{\circ}\text{C}$
Thread conform: (G,Rc,RP) BSP,BSPT,NPT,NPS,UN

Product model	DN	SIZE	A	B
SY-2602-04-00	DN15	1/2"	28	46.5
SY-2602-06-00	DN20	3/4"	31.5	47
SY-2602-08-00	DN25	1"	37	52.5
SY-2602-10-00	DN32	1 1/4"	56	67
SY-2602-12-00	DN40	1 1/2"	65	70
SY-2602-16-00	DN50	2"	75	72

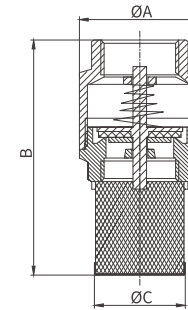


SY-2603

Check valve series

Nominal pressure: 105LB,1.6Mpa
Working medium: water,gas,oil
Working temperature: $-20^{\circ}\text{C}\leq t\leq 120^{\circ}\text{C}$
Thread conform: (G,Rc,RP) BSP,BSPT,NPT,NPS,UN

Product model	DN	SIZE	A	B	C
SY-2603-04-00	DN15	1/2"	83	43	14
SY-2603-06-00	DN20	3/4"	83	46	18
SY-2603-08-00	DN25	1"	106	56	23
SY-2603-10-00	DN32	1 1/4"	136	72	30
SY-2603-12-00	DN40	1 1/2"	136	77	37
SY-2603-16-00	DN50	2"	152	92	47
SY-2603-20-00	DN65	2 1/2"	230	124	62
SY-2603-24-00	DN80	3"	273	136	75
SY-2603-32-00	DN100	4"	273	151	95

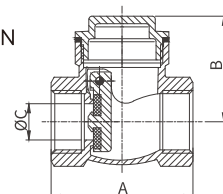


SY-2604

Check valve series

Nominal pressure: 105LB,1.6Mpa
Working medium: water,gas,oil
Working temperature: $-20^{\circ}\text{C}\leq t\leq 120^{\circ}\text{C}$
Thread conform: (G,Rc,RP) BSP,BSPT,NPT,NPS,UN

Product model	DN	SIZE	A	B	C
SY-2604-04-00	DN15	1/2"	47	35	14
SY-2604-06-00	DN20	3/4"	58	42	18
SY-2604-08-00	DN25	1"	64	47	21

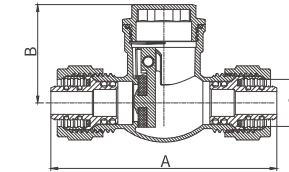


SY-2605

Filter valves

Nominal pressure: 105LB,1.6Mpa
Working medium: water,gas,oil
Working temperature: $-20^{\circ}\text{C}\leq t\leq 120^{\circ}\text{C}$
Thread conform: (G,Rc,RP) BSP,BSPT,NPT,NPS,UN

Product model	DN	SIZE	A	B	C
SY-2605-04-00	DN16	Φ16	79.3	34.5	16
SY-2605-06-00	DN20	Φ20	79.8	34.5	20

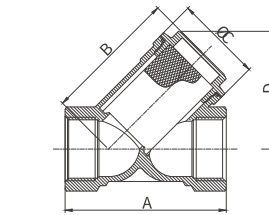


SY-2607

Filter valves

Nominal pressure: 105LB,1.6Mpa
Working medium: water,gas,oil
Working temperature: $-20^{\circ}\text{C}\leq t\leq 120^{\circ}\text{C}$
Thread conform: (G,Rc,RP) BSP,BSPT,NPT,NPS,UN

Product model	DN	SIZE	A	B	C	D
SY-2607-04-00	DN15	1/2"	55.5	48	30	41.5
SY-2607-06-00	DN20	3/4"	70	59	37	50.4
SY-2607-08-00	DN25	1"	82	68.5	43	60.1
SY-2607-10-00	DN32	1 1/4"	90	80	49.5	67
SY-2607-10-00	DN40	1 1/2"	101	87.6	56	75.9
SY-2607-10-00	DN50	2"	123.5	106.7	68	91.9

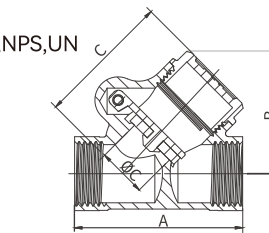


SY-2608

Filter valves

Nominal pressure: 200WOG
Working medium: water,gas,oil
Working temperature: $-20^{\circ}\text{C}\leq t\leq 120^{\circ}\text{C}$
Thread conform: (G,Rc,RP) BSP,BSPT,NPT,NPS,UN

Product model	DN	SIZE	A	B	C
SY-2608-04-00	DN15	1/2"	50	35.9	43.6
SY-2608-06-00	DN20	3/4"	54.5	40.7	46.2

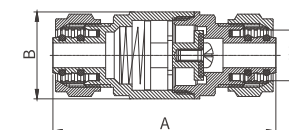


SY-2611

Filter valves

Nominal pressure: 105LB,1.6Mpa
Working medium: water,gas,oil
Working temperature: $-20^{\circ}\text{C}\leq t\leq 120^{\circ}\text{C}$
Thread conform: (G,Rc,RP) BSP,BSPT,NPT,NPS,UN

Product model	DN	SIZE	A	B	C
SY-2611-04-00	DN16	Φ16	71.8	27	16
SY-2611-06-00	DN20	Φ20	89	33	20



Gate valve series

The gate valve adopts a top-mounted structure, which reduces the connecting bolts of the valve body itself under the conditions of high pressure and large diameter, enhances the reliability of the valve and can overcome the influence of the self-weight of the system on the normal operation of the valve.

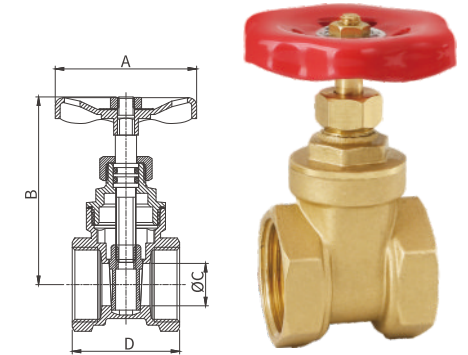


SY-1001

Gate valve series

Nominal pressure: 1.6MPa
Working medium: water, gas, oil
Working temperature: -20°C ≤ t ≤ 120°C
Thread conform: (G, Rc, RP) BSP, BSPT, NPT, NPS, UN

Product model	DN	SIZE	A	B	C	D
SY-1001-04-00	DN15	1/2"	50	64	13	36
SY-1001-06-00	DN20	3/4"	55	65	15	38
SY-1001-08-00	DN25	1"	60	73	19.5	46
SY-1001-10-00	DN32	1 1/4"	60	87	27	45
SY-1001-12-00	DN40	1 1/2"	70	98	33	47.5
SY-1001-16-00	DN50	2"	90	119	42	54
SY-1001-20-00	DN65	2 1/2"	90	158	57	63
SY-1001-24-00	DN80	3"	100	189	70	73
SY-1001-32-00	DN100	4"	125	237	91	78

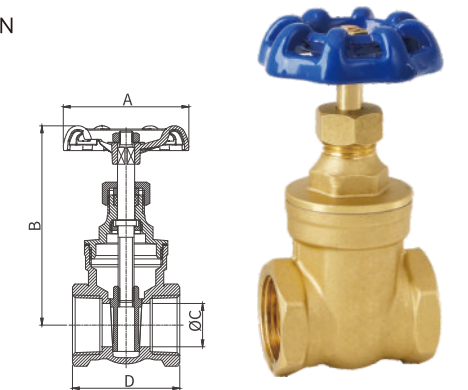


SY-1002

Gate valve series

Nominal pressure: 125WOG
Working medium: water, gas, oil
Working temperature: -20°C ≤ t ≤ 120°C
Thread conform: (G, Rc, RP) BSP, BSPT, NPT, NPS, UN

Product model	DN	SIZE	A	B	C	D
SY-1002-04-00	DN15	1/2"	55	76	13.5	41
SY-1002-06-00	DN20	3/4"	55	87	19	47
SY-1002-08-00	DN25	1"	60	96	24.5	50
SY-1002-10-00	DN32	1 1/4"	70	116	31	59
SY-1002-12-00	DN40	1 1/2"	85	129	37	60
SY-1002-16-00	DN50	2"	85	156	49	70
SY-1002-20-00	DN65	2 1/2"	97	193	65	94
SY-1002-24-00	DN80	3"	110	214	72	102
SY-1002-32-00	DN100	4"	125	238	90	112

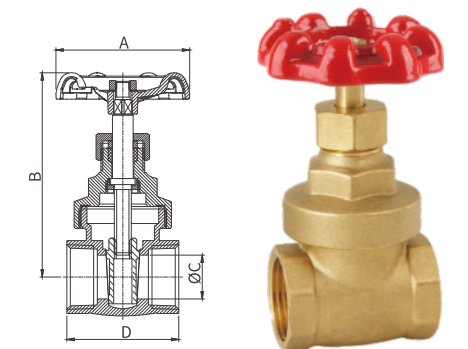


SY-1003

Gate valve series

Nominal pressure: 125S, 200WOG
Working medium: water, gas, oil
Working temperature: -20°C ≤ t ≤ 120°C
Thread conform: (G, Rc, RP) BSP, BSPT, NPT, NPS, UN

Product model	DN	SIZE	A	B	C	D
SY-1003-04-00	DN15	1/2"	54	75	14	43
SY-1003-06-00	DN20	3/4"	54	84	18	46
SY-1003-08-00	DN25	1"	60	94	24	50
SY-1003-10-00	DN32	1 1/4"	70	115	30	58
SY-1003-12-00	DN40	1 1/2"	70	123	37	65
SY-1003-16-00	DN50	2"	85	144	45	78
SY-1003-20-00	DN65	2 1/2"	100	166	55	84
SY-1003-24-00	DN80	3"	110	196	70	86
SY-1003-32-00	DN100	4"	125	233	90	93

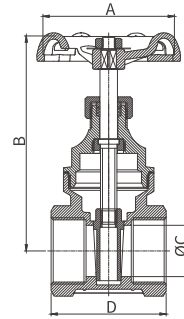


SY-1004

Gate valve series

Nominal pressure: 2.0MPa
Working medium: water,gas,oil
Working temperature: $-20^{\circ}\text{C} \leq t \leq 120^{\circ}\text{C}$
Thread conform: (G,Rc,RP) BSP,BSPT,NPT,NPS,UN

Product model	DN	SIZE	A	B	C	D
SY-1004-04-00	DN15	1/2"	54	73	14	45.5
SY-1004-06-00	DN20	3/4"	60	87	20	49.3
SY-1004-08-00	DN25	1"	64	98	25	56
SY-1004-10-00	DN32	1 1/4"	74	110	32	60
SY-1004-12-00	DN40	1 1/2"	80	124	37	65
SY-1004-16-00	DN50	2"	88	148	47	74
SY-1004-20-00	DN65	2 1/2"	110	180	59	81
SY-1004-24-00	DN80	3"	119	201	72	83
SY-1004-32-00	DN100	4"	140	248	92	102



SY-1504

Brass stop valve
Size: 1/2"



SY-1505

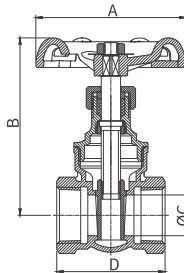
Brass stop valve
Size: 1/2"

SY-1005

Gate valve series

Nominal pressure: CLASS150
Working medium: water,gas,oil
Working temperature: $-20^{\circ}\text{C} \leq t \leq 120^{\circ}\text{C}$
Thread conform: (G,Rc,RP) BSP,BSPT,NPT,NPS,UN

Product model	DN	SIZE	A	B	C	D
SY-1005-04-00	DN15	1/2"	50	72	14	48
SY-1005-06-00	DN20	3/4"	70	84	19	50.5
SY-1005-08-00	DN25	1"	70	99	25	59.5
SY-1005-10-00	DN32	1 1/4"	80	117	32	65.5
SY-1005-12-00	DN40	1 1/2"	90	131	38	70.5
SY-1005-16-00	DN50	2"	100	164	50	75
SY-1005-20-00	DN65	2 1/2"	119	189	63.5	99.5
SY-1005-24-00	DN80	3"	140	227	76.5	108
SY-1005-32-00	DN100	4"	140	268	100	121



SY-1506

Brass stop valve
Size: 1/2"



SY-1511

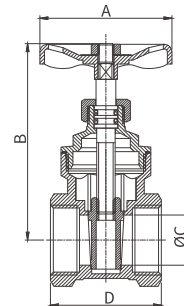
Brass(zinc)stop valve
Size: 1/2"

SY-1006

Gate valve series

Nominal pressure: 1.6MPa
Working medium: water,gas,oil
Working temperature: $-20^{\circ}\text{C} \leq t \leq 120^{\circ}\text{C}$
Thread conform: (G,Rc,RP) BSP,BSPT,NPT,NPS,UN

Product model	DN	SIZE	A	B	C	D
SY-1006-04-00	DN15	1/2"	50	65	13	38
SY-1006-06-00	DN20	3/4"	50	75	19	42
SY-1006-08-00	DN25	1"	60	87	24	48
SY-1006-10-00	DN32	1 1/4"	60	97	32	53.5
SY-1006-12-00	DN40	1 1/2"	80	106	37	58
SY-1006-16-00	DN50	2"	90	140	49	66
SY-1006-20-00	DN65	2 1/2"	90	158	57	63
SY-1006-24-00	DN80	3"	100	189	70	73
SY-1006-32-00	DN100	4"	110	216	87	80.5



SY-1512

Brass(zinc)stop valve
Size: 1/2"



SY-1591

Brass(zinc)stop valve
Size: 1/2"



SY-1592
Brass(zinc)stop valve
Size: 1/2"



SY-1593
Brass(zinc)stop valve
Size: 1/2"



SY-1595
Brass(zinc)stop valve
Size: 1/2"



SY-1596
Brass(zinc)stop valve
Size: 1/2"



SY-1597
Brass(zinc)stop valve
Size: 1/2"



SY-1601
Brass(zinc)stop valve
Size: 1/2"

Brass Radiator Valve

It is mainly used for the automatic control of thermal energy balance of hot water heating system and equipment.





SY-3001

Brass radiator valve
Size: 1/2"-3/4"



SY-3002

Brass radiator valve
Size: 1/2"-3/4"



SY-3007

Brass radiator valve
Size: 1/2"



SY-3008

Brass radiator valve
Size: 1/2"



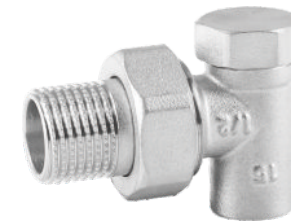
SY-3003

Brass radiator valve
Size: 1/2"-3/4"



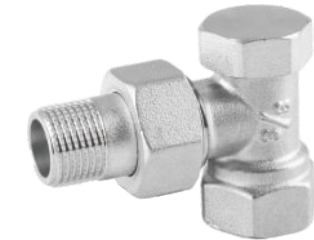
SY-3004

Brass radiator valve
Size: 1/2"-3/4"



SY-3016

Brass radiator valve
Size: 1/2"xΦ15



SY-3017

Brass radiator valve
Size: 1/2" 3/8"



SY-3005

Brass radiator valve
Size: 1/2"x16 1/2"x20



SY-3006

Brass radiator valve
Size: 1/2"-3/4"



SY-3018

Brass radiator valve
Size: 1/2"xΦ15



SY-3019

Brass radiator valve
Size: 1/2" 3/8"



SY-3310

Brass(zinc) angle valve
Size: 3/8"x1/2"
1/2"x1/2"



SY-3311

Brass(zinc) angle valve
Size: 1/2"x1/2"



SY-3321

Brass(zinc) angle valve
Size: 3/8"x1/2"
1/2"x1/2"



SY-3325

Brass(zinc) angle valve
Size: 3/8"x3/8"x3/8"
1/2"x3/8"x3/8"



SY-3312

Brass(zinc) angle valve
Size: 1/2"x1/2"



SY-3318

Brass(zinc) angle valve
Size: 1/2"xΦ16



SY-3326

Brass(zinc) angle valve
Size: 3/8"x1/2"
1/2"x1/2"



SY-3327

Brass(zinc) angle valve
Size: 3/8"x3/8"x3/8"
1/2"x3/8"x3/8"



SY-3319

Brass(zinc) angle valve
Size: 1/2"x1/2"



SY-3320

Brass(zinc) angle valve
Size: 1/2"x1/2"



SY-3328

Brass(zinc) angle valve
Size: 3/8"x1/2"
3/8"x3/8"

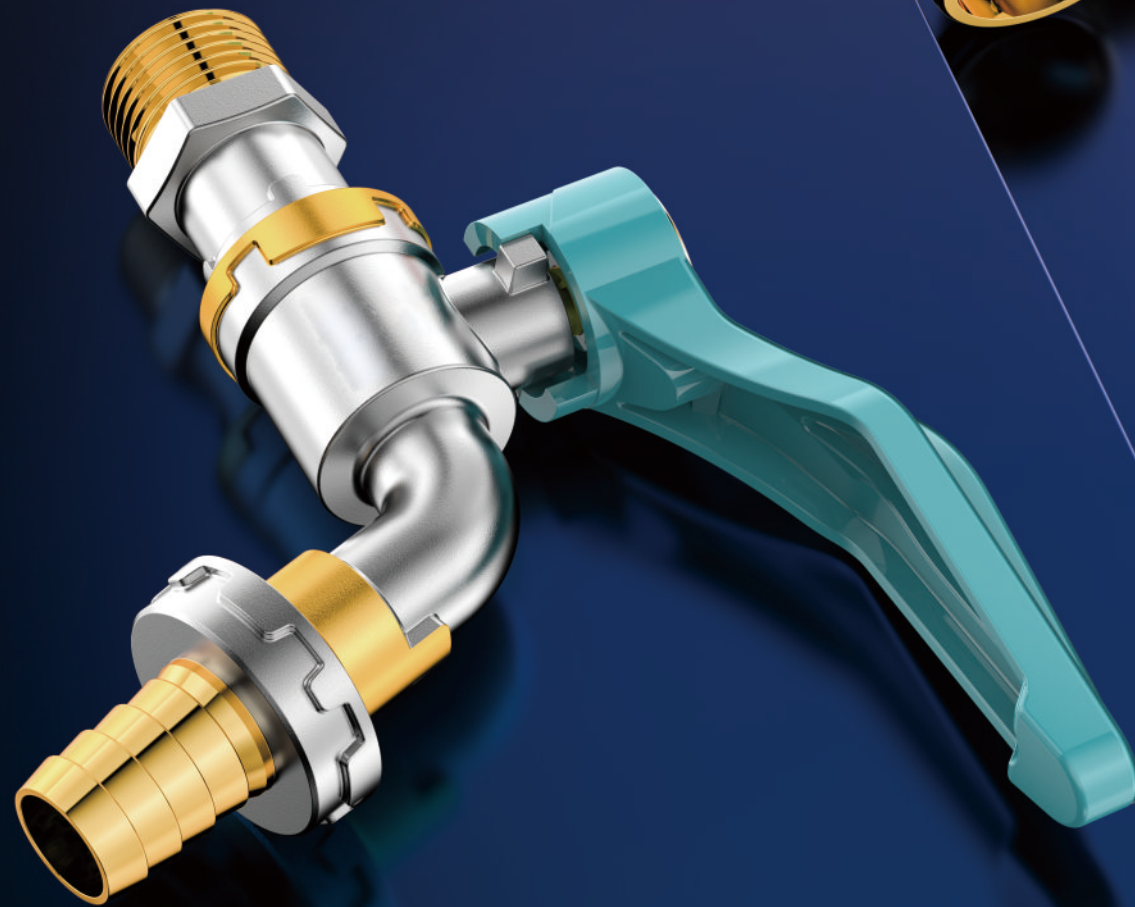


SY-3329

Brass(zinc) angle valve
Size: 1/2"x1/2"x1/2"

Bibcock Series

All copper faucet is a high-quality faucet product with characteristics such as corrosion resistance, wear resistance, antibacterial and sustainable use, making it an ideal choice for modern homes and commercial places.



SY-5202
Brass bibcock
Size: 1/2"



SY-5218
Brass bibcock
Size: 1/2"



SY-5217
Brass bibcock
Size: 1/2"



SY-5225
Brass bibcock
Size: 1/2"-3/4"



SY-5232
Brass bibcock
Size: 1/2"-3/4"



SY-5299
Brass bibcock
Size: 1/2"



SY-5301
Brass bibcock
Size: 1/2"-3/4"



SY-5321
Brass bibcock
Size: 1/2"-3/4"



SY-5427
Brass bibcock
Size: 1/2"-3/4"



SY-5432
Brass bibcock
Size: 1/2"-3/4"



SY-5326
Brass bibcock
Size: 1/2"-3/4"



SY-5329
Brass bibcock
Size: 1/2"



SY-5521
Brass bibcock
Size: 1/2"



SY-5531
Brass bibcock
Size: 1/2"-3/4"



SY-5330
Brass bibcock
Size: 1/2"-3/4"



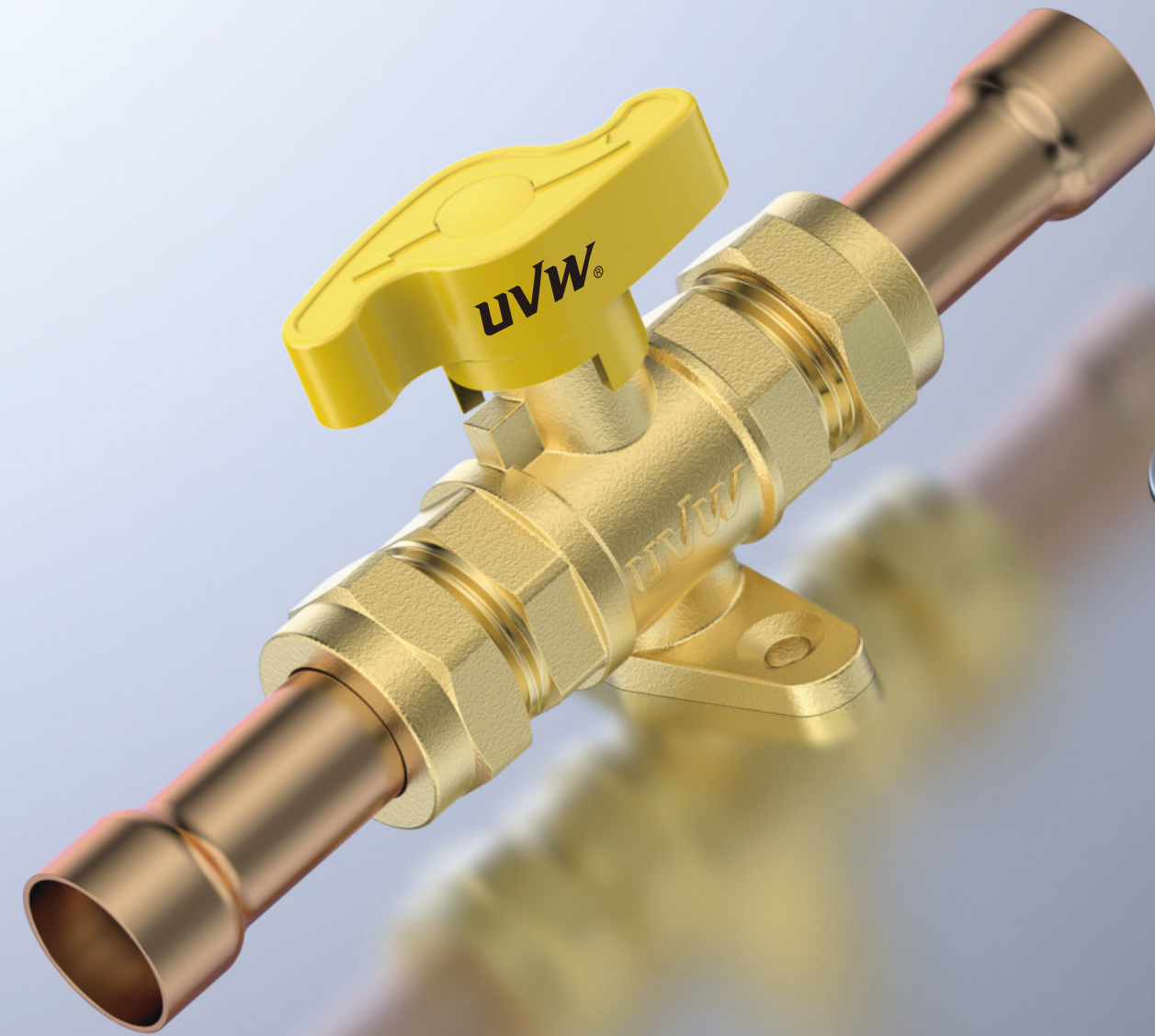
SY-5338
Brass bibcock
Size: 1/2"-3/4"



SY-5598
Brass bibcock
Size: 1/2"



SY-5599
Brass bibcock
Size: 1/2"



Gas valve Series

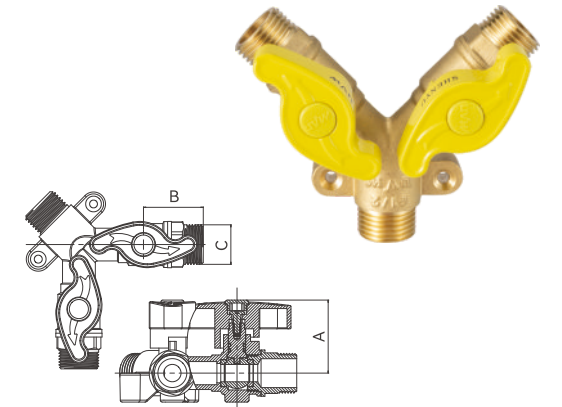
Brass gas ball valves are manufactured with excellent craftsmanship, providing unparalleled reliability and performance in gas control applications

SY-6037

Gas valve

Nominal pressure: 105LB,1.6MPa
Working medium: water,gas,oil
Working temperature: $-20^{\circ}\text{C}\leq t\leq 120^{\circ}\text{C}$
Thread conform: (G,Rc,RP) BSP,BSPT, NPT,NPS,UN

Product model	DN	SIZE	A	B	C
SY-6037-04-00	DN15	1/2"	38	31	G1/2

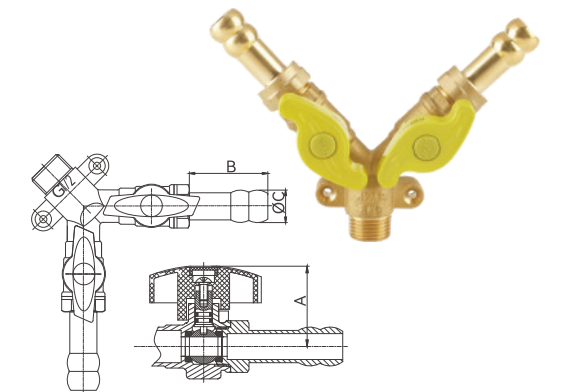


SY-6038

Gas valve

Nominal pressure: 105LB,1.6MPa
Working medium: water,gas,oil
Working temperature: $-20^{\circ}\text{C}\leq t\leq 120^{\circ}\text{C}$
Thread conform: (G,Rc,RP) BSP,BSPT, NPT,NPS,UN

Product model	DN	SIZE	A	B	C
SY-6038-04-00	DN15	1/2"	36.5	26.5	16

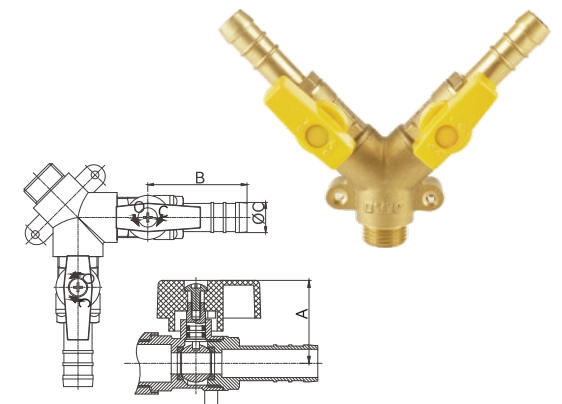


SY-6039

Gas valve

Nominal pressure: 105LB,1.6MPa
Working medium: water,gas,oil
Working temperature: $-20^{\circ}\text{C}\leq t\leq 120^{\circ}\text{C}$
Thread conform: (G,Rc,RP) BSP,BSPT, NPT,NPS,UN

Product model	DN	SIZE	A	B	C
SY-6039-04-00	DN15	1/2"	36.5	43.5	18

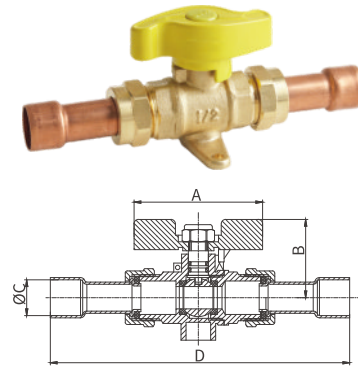


SY-6001

Gas valve

Nominal pressure: 105LB,1.6MPa
Working medium: water,gas,oil
Working temperature: $-20^{\circ}\text{C}\leq t\leq 120^{\circ}\text{C}$
Thread conform: (G,Rc,RP) BSP,BSPT,NPT,NPS,UN

Product model	DN	SIZE	A	B	C	D
SY-6001-14x14-00	DN15	14X14	57.5	35	14	132
SY-6001-16x16-00	DN15	16X16	57.5	35	16	132

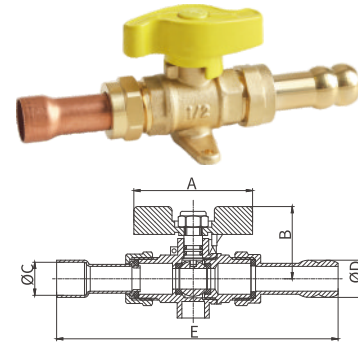


SY-6002

Gas valve

Nominal pressure: 105LB,1.6MPa
Working medium: water,gas,oil
Working temperature: $-20^{\circ}\text{C}\leq t\leq 120^{\circ}\text{C}$
Thread conform: (G,Rc,RP) BSP,BSPT,NPT,NPS,UN

Product model	DN	SIZE	A	B	C	D	E
SY-6002-1-04-00	DN15	1/2"X14	57.5	35	14、16	19	136
SY-6002-1-06-00	DN15	1/2"X16	57.5	35	14、16	19	136

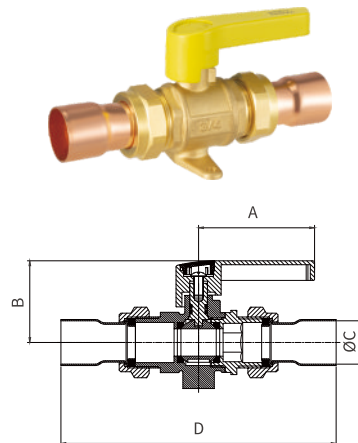


SY-6033

Gas valve

Nominal pressure: 105LB,1.6MPa
Working medium: water,gas,oil
Working temperature: $-20^{\circ}\text{C}\leq t\leq 120^{\circ}\text{C}$
Thread conform: (G,Rc,RP) BSP,BSPT,NPT,NPS,UN

Product model	DN	SIZE	A	B	C	D	E
SY-6033-06-00	DN20	22x22	61	43	22	127	

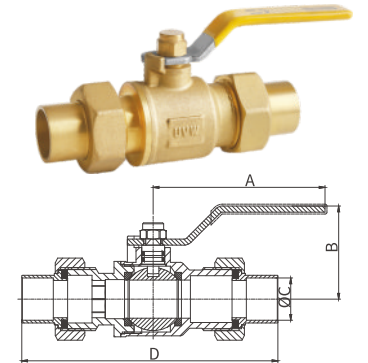


SY-6055

Gas valve

Nominal pressure: 105LB,1.6MPa
Working medium: water,gas,oil
Working temperature: $-20^{\circ}\text{C}\leq t\leq 120^{\circ}\text{C}$
Thread conform: (G,Rc,RP) BSP,BSPT,NPT,NPS,UN

Product model	DN	SIZE	A	B	C	D
SY-6055-06-00	DN20	3/4"	90	49	22	124

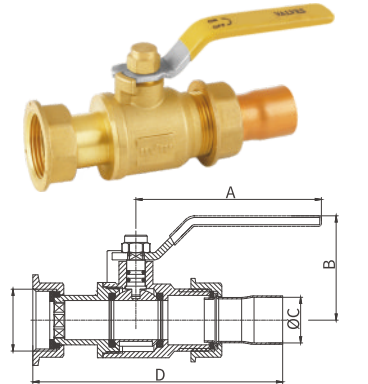


SY-6057

Gas valve

Nominal pressure: 105LB,1.6MPa
Working medium: water,gas,oil
Working temperature: $-20^{\circ}\text{C}\leq t\leq 120^{\circ}\text{C}$
Thread conform: (G,Rc,RP) BSP,BSPT,NPT,NPS,UN

Product model	DN	SIZE	A	B	C	D	E
SY-6057-06-00	DN20	3/4"	98	49	22	119	7/8

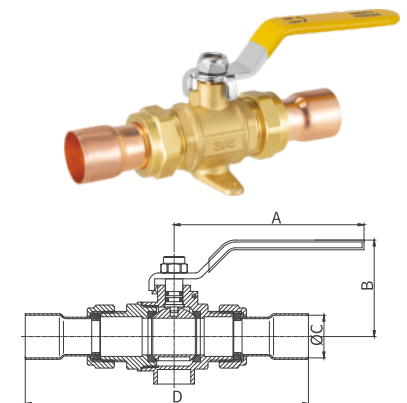


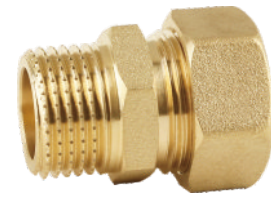
SY-6023

Gas valve

Nominal pressure: 105LB,1.6MPa
Working medium: water,gas,oil
Working temperature: $-20^{\circ}\text{C}\leq t\leq 120^{\circ}\text{C}$
Thread conform: (G,Rc,RP) BSP,BSPT,NPT,NPS,UN

Product model	DN	SIZE	A	B	C	D
SY-6023-06-00	DN20	22x22	98	49	22	141
SY-6023-08-00	DN25	28x28	107	57	28	170
SY-6023-10-00	DN32	42x42	135	60	42	182





SY-8001

Brass Fittings
Size: 1/2"Mx14
1/2"Mx16
3/4"Mx22



SY-8002

Brass Fittings
Size: 1/2"Fx14
1/2"Fx16
3/4"Fx22



SY-8101

Brass Fittings
Size: 1/2"x15 1/2"x22
3/4"x15 3/4"x22
3/4"x28 1"x28



SY-8102

Brass Fittings
Size: 1/2"x15 1/2"x22
3/4"x15 3/4"x22
3/4"x28 1"x28



SY-8103

Brass Fittings
Size: 15x15 15x22
22x22 22x28
28x28



SY-8003

Brass Fittings
Size: 14x14
16x16
22x22



SY-8004

Brass Fittings
Size: 1/2"Fx14
1/2"Fx16



SY-8104

Brass Fittings
Size: 15x15
22x22
28x28



SY-8105

Brass Fittings
Size: 1/2"Fx15 3/4"Fx15
1/2"Fx22 3/4"Fx22



SY-8106

Brass Fittings
Size: 1/2"Mx15 1/2"Mx22
3/4"Mx15 3/4"Mx22
3/4"Mx28 1"Mx28



SY-8005

Brass Fittings
Size: 14x1/2"Fx14
16x1/2"Fx16



SY-8006

Brass Fittings
Size: 14x1/2"Mx14
16x1/2"Mx16
22x3/4"Mx22



SY-8008

Brass Fittings
Size: 14x14x14
16x16x16
22x22x22



SY-8015

Brass Fittings
Size: 14x1/2"Fx14
16x1/2"Fx16
22x3/4"Fx22



SY-8107

Brass Fittings
Size: 15x15x15
22x22x22
28x28x28



SY-8108

Brass Fittings
Size: 1/2"Fx15
3/4"Fx22



SY-8109

Brass Fittings
Size: 1/2"Fx15
3/4"Fx22



SY-8201
Brass Fittings
Size: 1/2"MxΦ16
3/4"MxΦ20



SY-8202
Brass Fittings
Size: 1/2"FxΦ16
3/4"FxΦ20



SY-8203
Brass Fittings
Size: Φ16xΦ16
Φ20xΦ20



SY-8301
Brass Fittings
Size: 3/8"x3/8"
3/8"x1/2"



SY-8302
Brass Fittings
Size: 3/8"x3/8"
3/8"x1/2"



SY-8204
Brass Fittings
Size: Φ16xΦ16
Φ20xΦ20



SY-8205
Brass Fittings
Size: 1/2"MxΦ16
3/4"MxΦ20



SY-8207
Brass Fittings
Size: 1/2"FxΦ16
3/4"FxΦ20



SY-8303
Brass Fittings
Size: 3/8"x3/8"
5/8"x5/8"
7/8"x7/8"



SY-8304
Brass Fittings
Size: 3/8"x1/2"
1/2"x1/2"



SY-8208
Brass Fittings
Size: Φ16x1/2"MxΦ16
Φ20x1/2"MxΦ20
Φ20x3/4"MxΦ20



SY-8209
Brass Fittings
Size: Φ16xΦ16xΦ16
Φ20xΦ20xΦ20



SY-8210
Brass Fittings
Size: Φ16x1/2"FxΦ16
Φ20x1/2"FxΦ20
Φ20x3/4"FxΦ20



SY-8305
Brass Fittings
Size: 5/8"



SY-8306
Brass Fittings
Size: 3/8"x5cm



SY-8307
Brass Fittings
Size: 3/8"x6cm



SY-8308
Brass Fittings
Size: 3/8"x12cm



SY-8405

Brass Fittings
Size: 1/2"xΦ10
1/2"xΦ12
1/2"xΦ16



SY-8309

Brass Fittings
Size: 3/8"x3/8"x3/8"



SY-8640

Brass Fittings
Size: 1/2"
3/4"



SY-8622

Brass Fittings
Size: 1/2"
3/4"



SY-9203

Brass Fittings
Size: 7/8"



SY-9202

Brass Fittings
Size: 7/8"



SY-9201

Brass Fittings
Size: 7/8"



SY-6001-2

Brass Fittings
Size: 1/2"xΦ14
1/2"xΦ16
3/4"xΦ22
1"xΦ28
1 1/4"xΦ42



SY-8408

Brass Fittings
Size: 7/8"



SY-8807

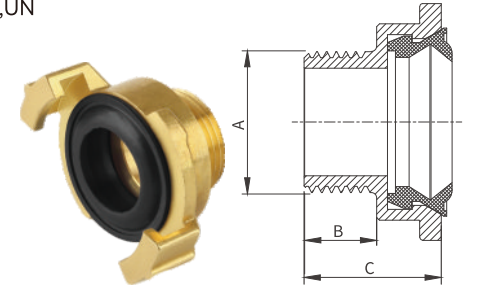
Brass Fittings
Size: 3/8"x3/8" 10mm-50mm
1/2"x1/2" 10mm-50mm

SY-8501

Specification

Nominal pressure: 105LB,1.6MPa
Working medium: water,gas,oil
Working temperature: -20°C≤t≤120°C
Thread conform: (G,Rc,RP) BSP,BSPT,NPT,NPS,UN

Product model	DN	SIZE	A	B	C
SY-8501-04-00	DN15	1/2"	1/2"	13.5	25.2
SY-8501-06-00	DN20	3/4"	3/4"	13.5	25.5
SY-8501-08-00	DN25	1"	1"	13.5	25.5

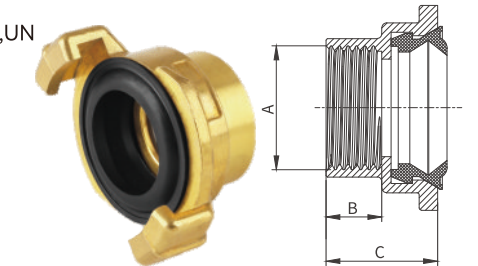


SY-8502

Specification

Nominal pressure: 105LB,1.6MPa
Working medium: water,gas,oil
Working temperature: -20°C≤t≤120°C
Thread conform: (G,Rc,RP) BSP,BSPT,NPT,NPS,UN

Product model	DN	SIZE	A	B	C
SY-8502-04-00	DN15	1/2"	1/2"	12	24
SY-8502-06-00	DN20	3/4"	3/4"	12	24
SY-8502-08-00	DN25	1"	1"	12	24



SY-8503

Specification

Nominal pressure: 105LB,1.6MPa
Working medium: water,gas,oil
Working temperature: -20°C≤t≤120°C
Thread conform: (G,Rc,RP) BSP,BSPT,NPT,NPS,UN

Product model	DN	SIZE	A	B	C	D
SY-8503-04-00	DN15	1/2"	54.5	48	14.6	27
SY-8503-06-00	DN20	3/4"	54.5	52.5	20	30.5
SY-8503-08-00	DN25	1"	54.5	27	26.8	35.5

